

# PURLEY PARISH NEWS

SEPTEMBER 2004



35p

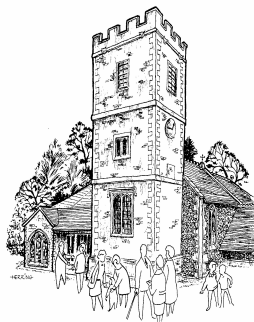
PROVERBS 22:6  
TRAIN A CHILD IN THE WAY HE SHOULD GO,  
AND WHEN HE IS OLD HE WILL NOT TURN FROM IT.

For the Church & Community of  
PURLEY ON THAMES

# ST. MARY THE VIRGIN

## PURLEY ON THAMES

---



### RECTOR

Rev. Roger B. Howell  
The Rectory, 1 Westridge Avenue  
Purley on Thames  
Tel: 0118 941 7727  
Email: rbh@bradean.fsnet.co.uk

### CURATE

Rev. Jean Rothery  
"Oaklea", Tidmarsh Road  
Tidmarsh  
Tel: 0118 984 3625

### ORDAINED LOCAL MINISTER

Rev. Andrew Mackie  
12 Church Mews  
Purley on Thames  
Tel: 0118 941 7170

### CHURCHWARDENS

Sally Robertson  
Tel: 0118 962 5978

Lorna Herring  
Tel: 0118 942 1547

### CHURCH HALL BOOKINGS

Lorna Herring  
Tel: 0118 942 1547

### BAPTISMS, WEDDINGS AND FUNERALS

All enquiries should be made to the Rector

---

[www.stmarythevirgin.fsnet.co.uk](http://www.stmarythevirgin.fsnet.co.uk)

## FROM THE LOCAL MINISTER.

I often walk to Tilehurst station now. It's not only a useful supplement to my efforts to lose weight, it's been encouraged by the company I work for selling off the building where I've parked on and off for the last 25 years.

One morning a couple of weeks ago I was walking along about quarter to seven – in the morning – when I met a couple of teenagers coming the other way. I decided to do something risky. I engaged them in conversation. Risky? – well, what reaction did you get when you last tried to engage a teenager in conversation at quarter to seven in the morning?

As it happened, these two were relatively civil. The conversation soon turned to the topic which concerned them most – where to find a decent hot shower.

You're right, that morning I was not walking to Tilehurst station, and there was little risk – these were teenagers I know well, part of the group of 12 who went from St. Mary's to *Soul in the City* in August. 12 out of 12,000 young people who paid to spend a week in Uxbridge under canvas, giving up every afternoon and evening to serve churches across London – from High Street Kensington to Urban Priority Areas near Heathrow.

But I wonder what your reaction was as you read the opening paragraphs. What assumptions did you make about how a story involving an encounter with teenagers at quarter to seven in the morning might unfold?

You need not have feared. If you have access to the Internet, you can find many stories – and watch some videos – about *Soul in the City* on [www.soulinthecity.co.uk](http://www.soulinthecity.co.uk). Most of the group from St. Mary's spent the week renovating a building on an estate near Heathrow. Previously a drinking club, the building had lain derelict for two years. The churches on the estate, one Methodist, the other Vineyard, had at last received the keys on the Friday before the first group from *Soul in the City* arrived on the Monday. Their vision – to turn a derelict building, in two weeks, into a community centre. No hot water, artificial light only (the windows were boarded up throughout), but loads of elbow grease and by the end you could eat your lunch off the floor of the Gents. Just imagine the condition at the start of the project, with the previous occupants turning the key in the lock and walking away after a last night party!

I made an assumption about your reaction to a story involving teenagers. But what is your reaction when people talk about church? What assumptions do you make then?



One of the leaders of *Soul in the City* made the point that people often know what the church is against, but our challenge is to show what the church is for. *Soul in the City* was about what the church is for – love of God expressed in an outpouring of love and compassion for people, and showing these no matter what their response.

The challenge for us at St. Mary's is to find ways of reflecting God's love and compassion day by day here in Purley on Thames, to reflect the theme of the stained glass window in our building by being the Good Samaritans of Purley on Thames.

The challenge for you, if you don't already come to church, is this – are you prepared to come and have your assumptions about church and about Jesus challenged!

With best wishes,

*Andrew*

---

## **PARISH REGISTERS**

### **WEDDINGS**

25 June	Christopher James Auger and Linda Ashby
3 July	Andrew Michael Durham Wigley and Trudie Anne Rothery
7 August	Paul Richard Waite and Anna Kate Fraser

### **FUNERALS**

28 June	Ernest Mucklejohn (Cremation) aged 89 years
30 June	James Heslop (Cremation) aged 80 years
14 July	Albert Gillett (Burial, Beech Road Cemetery) aged 82 years
21 July	Albert Roberts (Cremation) aged 92 years
2 August	Patricia Smith (Cremation) aged 68 years

---

## **COMMUNITY MEMORIAL SERVICE**

### **SUNDAY 10 OCTOBER AT 3:00 P.M.**

This annual service of remembrance is for all who have lost loved ones – particularly during the last twelve months, but also for those whose bereavement is more distant, but nonetheless real. Personal invitations will be sent to those with whom we are in touch, but all are welcome. If you would like a special invitation card, please let the Rector know.

# CHURCH SERVICES

5 Sept	9:30 a.m.	Family Worship
	11:15 a.m.	Holy Communion
	6:00 p.m.	Holy Communion
12 Sept	9:30 a.m.	Family Worship
	11:15 a.m.	Holy Communion with the laying on of hands
19 Sept	9:30 a.m.	Family Communion
	11:15 a.m.	Morning Worship
	6:00 p.m.	Evening Worship
26 Sept	9:30 a.m.	Family Worship
	11:15 a.m.	Holy Communion
3 Oct	10:30 a.m.	Harvest Thanksgiving
	6:00 p.m.	Holy Communion

## NEW AREA DEAN FOR BRADFIELD

The Priest-in-Charge of Burghfield, the Revd Jo Loveridge has been appointed as Area Dean of Bradfield in succession to Roger Howell.

## COMMUNITY HARVEST SUPPER

**Saturday 25 September at 7:30 p.m., The Barn, Beech Road.**

Any remaining tickets are available from the Post Office, Christine Taylor (942 9531) or Roger Howell. Last year a number of tickets were sold but the purchasers did not turn up for the event! We could have refunded the cost and re-sold them. If you find all tickets are sold, please speak to the Rector and he will let you know if there any returns. **If you buy tickets and then find you cannot come, let the Rector know please.**

This will be a sit-down meal, followed by an auction of donated goods in aid of the **Macmillan Cancer Relief**. The Rector would be glad to receive items for the auction – e.g. Wine, unwanted gifts, new toys, cakes Tel. 0118 941 7727.



Christians from different churches who live in Purley have been meeting together to pray for our community. The next dates are 6 September and 19 October at St Mary's church.

For details: Sally Robertson (962 5978).

---

# **PURLEY HORTICULTURAL SOCIETY**

## **LATE SUMMER SHOW**

This will be held in The Barn, Beech Road, Purley on Thames on Saturday, 11 September, 2004. Entry forms must be handed into the Trading Shed or to Mr. J. Armstrong, 169 Long Lane, Tilehurst by Wednesday, 8th September. The Show opens to the public at 2.30 p.m. to 4 p.m. with presentation of trophies at 3.45 p.m.

## **TRADING**

The Shed in the Memorial Hall car park is open from 10 a.m. to 11 a.m. on Saturdays and Sundays until the end of October. If you find you are unable to get to the Trading Shed during the opening times, you may telephone your order to Alex Stott on 941 9186 or email: vastott@aol.com.

I hope you have all had an enjoyable summer.

*Marion Dabbs*  
942 2349

## **MESSAGE FROM HOME FARM**

We complied with the old adage that you should 'make hay while the sun shines', while the local farmer who was to combine our wheat and barley went on holiday for a week and promised to be with us on the Monday of his return; the very day that the heavens opened. It was just as if I had ordered the rain and as yet nothing has been cut!, but I am ready for action as and when a window of good weather arrives as I have promised Vicky a few days away when harvest is over.

That said, I have recently been sent 'overseas', courtesy of WBC. Ah....do I feel Mr George Critchell's hackles rising? (letter to Ed. July). On that note we (us blues) were vehemently against the cuts in the allowance of travel tokens. If you saw the bill-board outside the post office, which claimed "Councillor slams cuts in travel tokens as ridiculous", I can assure you that I was misquoted. I actually said it was "b..... ridiculous!" and a whole lot more besides! However our battle did reduce the level of the cut to just over 10% (£44.50 down to £40). Where we were less successful was with respect to the cut in members' travel allowances being reduced by 16.6%; although I personally did not oppose it. This reduction will affect the more rural (mainly the Cons) rather than urban Councillors (mainly the Lib Dems).

I must say, George, that if you go shopping, at least you are going for yourself whereas if I go to Newbury for a meeting I am going on your behalf; Worth another letter anyone? But I digress... back to my trip 'abroad'. I have to confess it was not exactly glamorous, a day visit to the Isle of Wight in an extremely uncomfortable mini-bus looking at refuse

recycling units. It was a hot day, the smell hardly "Givenchy", the flies biting and the dust would have hardly passed a public health inspection. I had to buy my own breakfast and supper with the Isle of Wight Council providing a sandwich for lunch. However the visit was very interesting as the Island has developed its recycling sooner than most due to the shortage of land-fill sites.

Watching metal cans leaping off a conveyor belt under a magnetic force was very impressive. Indeed, we saw home pre-sorted cans being poured back into the main rubbish inlet hopper as they found it the easiest way to send the cans to the metal press. OK it didn't do a 100% perfect job. The odd bit of paper lying on top of a can got whisked away too, whereas a can underneath a pair of 'ladies corsetry' was firmly held down. However it showed us what could be done without the need for separation at source.

As I am writing this article prior to the two planning meetings called for August I cannot comment on individual applications, although by the time you read this it will be history. We are constantly reminded that we have to attend these meetings with no pre-conceived ideas – I wonder how I will vote with regard to the gypsy camp?

Back to the weather... whilst moping about the other day Vicky suggested that I continue with a tiling job begun last year! This is not my favourite pastime but I have to admit to a certain amount of job satisfaction... so it's back to the tiling while I wait for that window of good weather. After all I can always finish the tiling next year!

*Tim Metcalfe  
Parish and District Councillor*



# **HARVEST FAIR**

at

**St. Mary the Virgin**

**SATURDAY 16TH OCTOBER**

**11.30 - 2.00pm**

**Light Lunches &  
Refreshments**

**Books**

**White Elephant**

**Cakes**

**Toys**

**Tombola**

**Plants**

**Fancy Goods**

## MACMILLAN 'COFFEE MORNING ON FOOT'

Young or old, male or female, everyone is welcome to join Purley Pathfinders on their 200<sup>th</sup> walk.

Our walks are often described as *coffee mornings on foot* so this special walk will be held during the Macmillan Coffee Morning Week. It is hoped everyone will collect sponsors or make a donation to the Macmillan charity. The walk will take place on Friday 24 September and will be along a pleasant route beside the Kennet & Avon Canal. There will be four lengths of walks to choose from, all on good paths, and all can be walked at your own pace. Meet at Theale Station ready to start walking at 10 a.m. or if you require a lift, or can offer a lift, then meet at Purley Village (near the junction with Mapledurham Drive) just before 9.40 a.m.

- Option 1: 3 ½ miles Theale to Aldermaston & return by train.  
(26 mins past hour £1.80)
- Option 2: 5 ¼ miles Theale to Woolhampton & return by train.  
(22 mins past hour £2.70)
- Option 3: 7 miles Theale to Aldermaston & return on foot.
- Option 4: 10 ½ miles Theale to Woolhampton & return on foot.

You may like to bring a flask of coffee for a break at Aldermaston Visitor's Centre. I will be selling homemade biscuits, in aid of the charity, to go with it! There will be the option to have lunch near all three stations, or you may like to bring your own picnic. If you would like more details then do give me a ring.

If you are unable to make the walk, but would like to support the group in their fundraising effort, please ring me with your donation pledge.

Thank you on behalf of the Macmillan Nurses.

*Nicki Woodward*  
984 1919



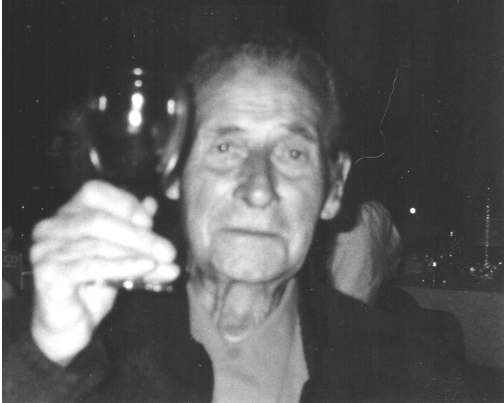
## PURLEY JUBILEE F.C.

The Under 12's team is looking for one or two new players to join them for next season, when they will be playing in the Woodley & Earley District League, with matches being played on Saturday mornings. Training sessions, which are held at Deneffield School, resumed at the end of August.

If you are interested in finding out more, please contact ...

*John Gray*  
984 3445

## RONALD GEORGE JENKINS



Graeme and I cannot begin to tell you how much comfort we have derived from the literally hundreds of sincere messages, cards, phone calls, flowers and donations we have received from you all.

How lucky we are to live in our village of **Purley on Thames** that has so many caring people residing in it.

When we first came to Purley in January 1986, I recall my first customer at the Post Office saying "Do hope you will be here longer

than the Robinsons – they were only here for 8 years". Well, yes, we are still here after 18. Graeme, our son, was just one year old then and, through him, Mandy Lawrence came into our lives and, at first, became his childminder. She then progressed into the shop and is now our very treasured friend.

Ron passed away suddenly in mine and Graeme's arms at 2:30 a.m. Monday 9 August 2004. I rang Mandy at 3:00 a.m. and she was here at 3:05 a.m. and has remained over since, helping with her thoughtfulness and friendship. Thank you Mandy so much – you really are so very special to us.

Big thanks also to my Mum, Janet, who has been making incessant cups of tea that we all seem to be living on at the moment! However, my biggest strength and my rock is Graeme, who has grown into a remarkable young man. Ron was and I am extremely proud of him and I am grateful to God that I am so blessed.

Thank you so much, all you wonderful, supportive people. What a send off Ron had. He, himself, would have said just one word to you all.  
**"Cheers!"**

*Charlotte Jenkins, Purley Rise PO Stores*

## JAMES HESLOP

Pat Heslop and her family would like to thank everyone for their sympathy, kindness and practical help following the death of James in June. Pat and James lived in Purley for nearly nineteen years and Pat will miss all their friends and neighbours. She has moved into residential care and would welcome visitors - do contact her daughter Caroline Wilson (984 1523) if you would like her address.



## AN EXCITING NEW SEASON

Following its very successful 30<sup>th</sup> Anniversary Season Pangbourne Choral Society is starting its 2004-2005 season on Tuesday 14 September. The highlight of this season will be a 2 night performance of Britten's WAR REQUIEM in March to commemorate the sixtieth anniversary of the ending of World War II, to be staged in their usual venue – the stunning Falkland Islands Memorial Chapel at Pangbourne College.

The War Requiem was commissioned to celebrate the consecration of St Michael's Cathedral in Coventry (UK) in May 1962. Britten was a lifelong pacifist and the War Requiem is about the brutality and futility of war, along with the senseless suffering and monstrous death and destruction that it brings. As well as the normal Requiem text the War Requiem includes many of the World War I poems. For this semi-staged performance the Choral Society will be joined by Pangbourne College Choir and international soloists under the baton of Darren Everhart and the Artistic Direction of Kim Begley.

The rest of the season will include The Friends of Reading Hospitals annual Christmas concert of seasonal readings & music; a slighter summer concert of American Music in May and a performance of Mahler's 2<sup>nd</sup> Symphony with the Reading Symphony Orchestra in June at the Reading Concert Hall. A very varied and full season!

The society welcomes new members of any voice. Auditions are not required but enthusiasm and commitment are expected. Just come along to any of our Tuesday evening rehearsals (7:45 - 9:30 p.m.); or contact us via e-mail: [pcs@musician.org](mailto:pcs@musician.org). Further information can be found at [www.pangbournechoralsociety.fsnet.co.uk](http://www.pangbournechoralsociety.fsnet.co.uk).

Members of other choral societies or choirs who would like the opportunity to sing The War Requiem, an infrequently performed work, will be especially welcome.

## PURLEY PATHFINDERS

Summertime and Wimbledon go together like strawberries and Pimms, and on our first walk in July we had them all as, during Wimbledon fortnight, we went on our traditional Wimbledon Strawberry Walk. Walking around Yattendon, we went up and down through lovely woodland in which foxgloves poked their lilac heads above glades of fresh green grass. At Quick's Green we were pleased to find someone at the Chapel which we had first viewed five years ago, hearing then, from the owner, the exciting plans for its conversion to a house. We were delighted to be welcomed inside once more to see the progress made (although I'm not sure he realised there were 33 of us!). Curiosity satisfied, we continued on our rollercoaster route through pretty woodland and areas lost in a purple haze of willowherb. Usually we pick strawberries at Buckholdhill Farm to eat

with our traditional Wimbledon-style picnic there. Unfortunately this was not possible this year, so instead we headed back to the garden of Cherry Acre to picnic there instead. In true Wimbledon fashion, it was not long before the rain came down, but we were quite content in the shelter of the marquee, tucking into fresh English strawberries with Pimms – with Robinson's Lemon Barley for the more restrained!

Continuing our 'River Thames' theme, we began our next walk from Henley where the river shimmered in the sunshine. We made our way along its bank, passing a variety of boats and waterfowl. From Henley Bridge we were soon enjoying the coolness of Remenham Wood as we climbed a pleasant path within this lovely woodland. Leaving the shelter of the trees, we enjoyed great views down to the Thames and across to the woodland of Hambledon, as we walked through fields dotted with poppies. On our way to the banks of the River Thames we dropped down to a lane along which cottages boasted colourful summer gardens. We took our break alongside the picturesque Hambledon Lock, giving us chance to walk on the 330 yard long bridges above the spectacular foaming weirs – a welcome cooling experience on this hot morning. Our route back followed the river as it curved along, passing the one acre Temple Island with its Georgian Folly. The Royal Regatta course starts here, and we followed its one mile & 550 yards back to Henley Bridge, enjoying the activity on the water, especially a family of sweet coot chicks, and the swans, flapping their powerful wings in majestic fashion. After lunch at The River & Rowing Museum, we were magically transported into the world of Ratty, Mole, Badger and Toad as the tale of *The Wind in the Willows* came to life in their new, enchanting attraction.



Our Summertime Special focused on The River Thames, and it was with great anticipation that we arrived at Greenwich Pier. Soon we were aboard The Thames Rivercruise, heading for the Thames Barrier. On the way we took in all the sights with interest – Canary Wharf Tower, the tallest building in the country; The Millennium Dome, the largest dome in the world; and the giant Millennium Man within his statue of tangled metal. As we crossed The Meridian Line to pass from the Western hemisphere to the Eastern Hemisphere, there ahead of us were the ten moveable gates of The Thames Barrier – 'the eighth wonder of the world'. We sailed through The Barrier where it spans the 520 metres of the mighty Thames, a far cry from where, in March, we had stood in the very spot where The Thames makes its humble beginnings in Gloucestershire, 183 miles away, Quite a contrast, and an exciting moment! It is said that once through The Barrier



it is difficult to say where the river ends and the sea begins. The official Thames Path ends here so, once through The Barrier, we were happy to say that we had reached the sea! Coffee was served on board as we made the return journey to Greenwich. Alongside the impressive Cutty Sark, we began our walk, firstly along The Thames Path through this historic area. We passed the huge façade of The Royal Naval College, with The Queen's House beyond, its view of the river preserved as instructed by Queen Mary 11. We passed Trafalgar Tavern, a

haunt in the 19<sup>th</sup> century of writers such as Dickens, and then the pretty Trinity Hospital, Almshouse for nearly 400 years.

After pausing to take a lingering look at The Dome, bathed in sunshine, we left the river to climb up into Greenwich Park, the oldest Royal Park. Indeed, the park proved to be full of stately ancient trees. We headed for 'One Tree Hill', one of Queen Elizabeth 1's favourite spots, and one which provides a wonderful view over London. We took advantage of the benches surrounding the trunk of the 'one tree' before heading off in search of another famous tree, 'The Queen Elizabeth's Oak'. Planted in the 12th century, it has now, sadly collapsed. However, the Duke of Edinburgh has planted a new oak alongside it. The Victorian Flower Gardens looked glorious with numerous flower beds and borders burgeoning with colour. Squirrels scampered up and down the trees, but we chose a slower pace to take in the beauty and peacefulness. Through a fence we spotted several fallow and red deer, and a pretty lake supported numerous ducks. We left the Flower Gardens to walk down an avenue of chestnut trees, with the enormous statue of General Wolfe ahead of us. Reaching the statue, alongside The Royal Observatory, we shared its expansive view, and one of London's best known, across the park, The National Maritime Museum, The River Thames, The Millennium Dome, and much of East London.

Next we chose various ways to spend our 'free time' – taking part in an interesting tour of the Observatory, and standing in its courtyard with one foot in the East, and one in the West, astride The Meridian, 0'Longitude, and from where the world's time is measured; exploring other parts of Greenwich Park; browsing through Greenwich Market; and taking the unique opportunity to walk under the Thames via a foot tunnel. So, our 'special' day in which we had strolled beside, sailed upon, and walked beneath The River Thames, came to an end. We left Greenwich in our coach, driving home via Westminster Bridge giving us a good view of other famous Thameside landmarks – The Houses of Parliament, Big Ben, and The London Eye.

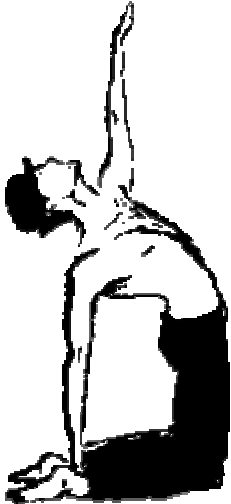
The term ended with us watching a traditional Thames spectacle, the Swan Upping. We gathered at Mapledurham Lock for coffee and cake to watch the flamboyant arrival of the Vintners and Dyers, dressed in their smart uniforms of either blue or red, aboard their six skiffs. The Queen's Marker, David Barber looked very smart in his red jacket with shiny gold buttons and feather in his cap. The 'Uppers' had ringed, weighed and checked many cygnets on their way, and they made a colourful party as they continued their journey along The Thames - A nostalgic tradition, dating from the 12th century, and one not to be missed during Pathfinder's 'Year of The River Thames'.

We'll be back in September with an exciting programme planned, taking us into the Autumn with the delights that this season brings. If any ladies would like to join us, please ring for a programme. Walks take place on various weekday mornings and range from 4 to 6 miles with the occasional option to walk slightly shorter or longer walks.

Everyone is welcome to join us on our Coffee Morning on Foot on 22nd September. This will be our charity walk in aid of Macmillan Nurses so even if you can't make the walk, you may like to sponsor the group. See separate article.

Nicki Woodward  
984 1919

---



Are you interested in doing some exercise, but not into the Gym? Ever fancied learning a new skill or taking up a new social activity? **Jamie Read Dance** is the area's only dance centre specifically for adults! We offer evening classes in Jazz & Tap - for beginners, improvers or advanced dancers - at venues in Reading, Theale and Burghfield. Our experienced teachers provide a relaxed, fun atmosphere where you can really enjoy dance, regardless of age, shape or size!

We also run our fantastic **Weekend Dance Breaks** at the Moathouse Hotel. It's a great way to pamper yourself and get away for a few days! As well as getting everything you would expect from a 4-star hotel, you have the chance to take part in dance classes taught by West End professionals! Classes are suitable for anyone, regardless of fitness or experience, and include Salsa, Tap, Jazz, & Ballet, plus specialist classes such as 'Pop Video Jazz' or 'Riverdance\*'. You can choose what level classes you attend, and you can even go to the nearby Nirvana/Pulse8 spa & sauna, all-inclusive!

Details/Booking on 0118 951 1388 or at [www.jamie-read-dance.co.uk](http://www.jamie-read-dance.co.uk)

\* Exact classes subject to change



## LETTERS TO THE EDITOR

Damage to a car at the Wedding held on Saturday 7<sup>th</sup> August

Weddings should be joyous affairs and I am pleased to say that the wedding held on the 7<sup>th</sup> August at St. Mary's Church was no exception.

I shall remember it for a different reason, because while I was officiating at the service between 1-2pm, someone damaged my six week old car parked next to the Marina gates. From the damage sustained, a deep scratch along the back door and side panel, it is either a regrettable accident which so far no one has had the courage to own up to, or as is more likely vandalism. Either way, the cost of repairing the damage is in the region of £350. I consider that this money has been effectively stolen from a combination of my bank account and my insurers, money that could have been spent in a far more worthwhile way.

I would like to say to whoever has caused this damage, whether a child or an adult, 'If you think that you have got away with it because I do not know who you are, I don't need to know, because God does'.

I would however be pleased to receive an apology from you.

My car, a silver Vauxhall Astra OV04WNX will continue to be parked near the church frequently, as I can't serve the people in our parish without it. It would be good to find a note left on it or to receive a phone call.

I shall be praying for a change of heart for you.

I have reported this incident to the police and if anyone else has witnessed or heard anything, they would be pleased to hear from you quoting ref no FP9163044/04

*Jean Rothery  
Curate*

## PURLEY ON THAMES PARISH COUNCIL

The view of the tree cover in Purley on Thames from the Oxfordshire bank of the river clearly shows the advantage of various planting schemes over the years. Many newcomers and others may not appreciate that a considerable number of the trees in the parish are subject to tree preservation orders which means they may not be lopped or felled without permission. To avoid possible legal action and costs residents and/or their contractors should always seek approval from the Tree Officer at West Berkshire Council before carrying out any tree work.

Following the posting of the statutory notice WBC have advised us that no election has been called for the casual vacancy on the Parish Council and

therefore we will now be empowered to co-opt a replacement for Mr Miller. Anyone interested in serving on the Parish Council is invited to contact the office for further information and an application form.

The distribution of travel tokens from the office at the start of July was a great success but should anyone now have any problems or queries they should contact the WBC Concessionary Fares Team on 01635 519800.

In conjunction with the opening of the office on a Monday evening it has been decided to offer a council surgery between 6.00 and 8.00 p.m. Residents will have the opportunity of discussing matters with District or Parish Councillors who will attend on a rota basis. Further information will be provided following a trial period which will have already commenced by the time of distribution of this publication.

*Brian J. Smith*  
*Clerk to Purley on Thames Parish Council*

The office is located near the tennis courts and is open:

Mondays: 5.45 p.m. to 8.30 p.m.  
(except bank holidays)

Thursdays: 9.00 a.m. to 3.15 p.m.

Purley on Thames Parish Council  
Parish Office  
Goosecroft Lane  
off Beech Road  
Purley on Thames  
Reading  
RG8 8DR

Tel/fax: 0118 984 4507

## **COMING TO YOU FROM PURLEY PLAYERS**

**An evening of sophistication, intrigue and murder**

**on Saturday, 20 November 2004**

**Purley Players will be presenting a**

**Murder Mystery Evening**

**entitled**

**"A Show to Die For"**

**At St Mary's Church Hall, Purley on Thames**

**A three course meal will be served during the evening**

**Tickets will be on a first come first served basis**

**Box Office opens: Monday, 11 October 2004**

**Tel: 0118 062 5760**





## PURLEY ON THAMES CRICKET CLUB

### UNDER 11'S PLAY AT "LORDS" CRICKET GROUND



Purley on Thames Under 11 team were invited to provide a lunchtime demonstration on the 4th day of the England/West Indies test match at Lords this weekend.

They had been practising their fielding and catching drills, with Under 11 team manager Nick Holman and U13 team manager Andy Wheeler, at extra training sessions in the weeks prior to attending Lords.

During their Kwik Cricket demonstration, the boys had the audience in the "Tavern Stand" applauding and cheering as they hit 6's into the crowd!

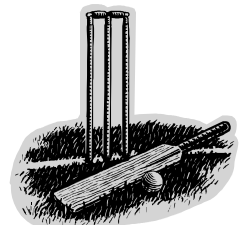
This was a very memorable opportunity for both boys and managers, particularly as a member of the "Lords" staff said that even employees at the ground are not themselves allowed on the outfield unless it is part of their job.

Nick Holman said "It was an 'out of this world' experience for myself and the boys to take part in a 'once in a lifetime' activity. The boys were extremely excited in the weeks prior to the event, and all performed to the best of their ability on the day, and were appreciatively applauded by the spectators watching.

I felt that I couldn't have asked any more from them.

I would also like to express my thanks to Andy Wheeler for his help on the day, and Andy Hobbs (Berkshire Cricket Development Officer) for the opportunity "

On a bus a man gave his seat to a woman. She fainted.  
On recovering, she thanked him. Then he fainted.



## **UNDER 17'S REACH BERKSHIRE COLTS LEAGUE FINAL**



Purley on Thames Under 17 team beat Cookham Dean U17 team Sunday 25 June to reach the Final of the Berkshire Colts League U17 competition, for the first time.

The Final was played at Boyne Hill on Friday evening, against Maidenhead and Bray U17 team.

The Purley on Thames side, which consisted of 5 x U15 players, put up an excellent

performance, but were finally beaten by 30 runs.

Paul Reber and Patrick Allen opened the batting, scoring 34 and 50 respectively, and Sam Tucker's bowling resulted in 2 of the 3 wickets taken by Purley on Thames.

Manager, Chris Allen said "It's nice to finish on a 'high', with all the hard work put in by myself and the other coaches resulting in the standard of junior cricket at Purley on Thames improving dramatically!

Also, with a natural progression from junior to adult cricket at the club now, all ex - Juniors are welcome to join the club as Adult members, to play on Saturday or Sundays at various levels, either competitive or recreational matches.

The future looks 'rosy' for Purley on Thames..."

If you are interested in playing either adult or junior cricket, please contact Martin Bishop on 01189 453117, or email [martin.bishop@bt.com](mailto:martin.bishop@bt.com)

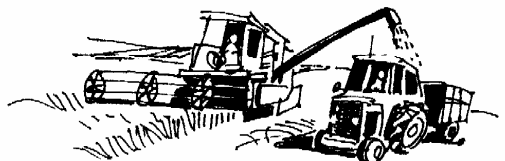
## **HARVEST THANKSGIVING**

### **SUNDAY 3 OCTOBER, ST. MARY'S CHURCH**

10:30 a.m. A Service of Thanksgiving for all the family

6:00 p.m. Holy Communion

We invite you to join us to give thanks for the many things we take for granted day by day, and also to give some thought for those who never harvests for which to give thanks.



## **WHAT'S HAPPENED TO THE VILLAGE PLAN?**

Many of you completed the Village Plan questionnaire and in the July Parish News some of the results of the analysis were included.

Since then the analysis has been completed, priorities identified and action plans discussed with a range of third parties. The Village Plan report is being drafted at the moment and will contain information, analysis from the questionnaires and action plans to bring about future change.

Over the next six week or so the Village Plan document will be completed and printed and all households in the Purley civil parish should receive a copy through the door during the late autumn. Those who gave up so much of their time to deliver and collect the questionnaire may be asked if they are willing to deliver the Plan to the same group of households.

There will be a public launch of the document, at a meeting in the Barn on the evening of November 2, to which everyone is invited. This will be an opportunity to comment on the findings, influence the proposed actions and even volunteer to help on an action if there is one which interests you particularly.

Thank you for your support so far. We hope that we can use the Village Plan results to make a difference to Purley, with your help.

*Penny Williams*

## **PURLEY W.I.**

Sadly Monica Venner has died and we remember her as a staunch supporter to W.I., of that we were grateful. We pass our condolences to her family.

No meeting in August so we're gathering in a member's garden for a fish and chip supper then meeting up with Tidmarsh group for another skittle bash. Saturday 11 September is the Purley Horticultural Show. Please add this to you diary. Please have a go, you don't have to have green fingers to enter, see you at the Barn.

We were pleased with our stall efforts at the Pangbourne fete, also our profit for ACWW (Water wells for the third world) which was obtained as a result of a coffee morning in the garden of Sybil Pryor. Thank you.

Gillian McDonald gave a detailed report, as our representative in Sheffield. She forwarded on our votes for this year's resolutions which go on through to the government, where results were not as expected. She certainly had a couple of fun days and recommended the visit to most and was rewarded by 'gloating' over T.V. news reporter George Alagiah, who was a speaker on the day.

Mrs Riley, our speaker on Graphology from Slough arrived somewhat shaken after an unfortunate bump in her car but like all good troupers

carried on regardless. We sat with our own handwriting which we were able to analyse. Depending on using thin or thick pens, slanting of letters, use of margins and spacing between words, your personality can be obtained. If writing is large or small, has end and starting strokes, all can show up moods and age. So when you trundle off to the all important interview, remember it's not just the crisp white shirt and shiny shoes, it could be the arches in your M's and N's in you application letter that gets you the job. Now, don't go off and type a letter - that would be cheating! Mrs Riley was asked to analyse someone's writing and was amazed at 'his' hang-ups but the he was the British spy, Philby.

Flower Competition      1<sup>st</sup> } Margaret Martin, Shirley Cooper, Dorothy Viljeon  
   2<sup>nd</sup> Sylvia Conquest

Competition                1<sup>st</sup> Sylvia Conquest  
Limerick                    2<sup>nd</sup> Edna Bint

September's speaker is Sandy Peacham on GI baby looking for father.

The meeting will be on Wednesday 8 September, 7:30 Purley Memorial Hall, Glebe Road. Stall: Produce. **Visitors Welcome.**

*Sylvia Conquest*  
941 1936

## **DO YOU LOOK AFTER SOMEONE?**

I am very keen to contact anyone who might be described as a 'Carer'.

Many people do not see themselves as 'Carers' – and may not like the label. However, there are a large number of people in West Berkshire who look after a family member, friend or neighbour who is frail, ill or disabled. Carers enable many people to continue living at home.

My name is Jenny Hatch and I have just taken up the post of User/Carer Development Officer at West Berkshire Council. My main role is to make contact with Carers and those they care for across the county and to raise awareness of user/carer issues.

As a Carer, your life may be taken over by the situation in which you find yourself. All aspects of your life may be affected: health, employment, finances, accommodation, leisure and holidays. There are organisations and services available in the area that can support you in your caring role.

We are planning to involve individuals and their Carers in planning and evaluating such services to meet their needs. We hope that, by raising the profile of carers in West Berkshire, we will be able to contact those who care at home in order to offer them information, support and the opportunity for a break if this is what they want or need.

If you would like to know more, please ring me on 01635 519406. It would be good to hear from you.

## PROJECT PURLEY

The next meeting of Project Purley will be held on 17 September at 8 p.m. at The Barn, Goosecroft Lane Beech Road. Kerr Kirkwood will give a talk entitled 'A. W. Bucknell - Yeoman Farmer'.

This year's outing for members of Project Purley took place on Friday, June 18th, when seventeen of us motored down to the beautiful city of Salisbury. As soon as we arrived we were able to enjoy a cup of coffee in Bernieres' Restaurant, a compact yet comfortable building next to the 'Redcoats in the Wardrobe' museum. It was then that we received our first surprise of the day. Lt Col. David Chilton, the museum curator, invited us into the Regimental Room, where we were able to handle and examine an exhibition of World War I weaponry, including a Maxim machine gun, one of the first anti-tank rifles, and grenades as well as casualty reports and war diaries. Such items are not normally accessible to the public, but were on display for a group of children from the Godolphin School who were conducting historical research.

At noon we walked across the Cathedral Close to meet the guides who were going to take our party on a tour of Salisbury Cathedral. We were divided into two groups because of the amount of background noise not just from an organ rehearsal, but also due to the scaffolding being erected for a concert due to take place the following day. The view of some members of our group, was that atmosphere within the building was one of commercialisation rather than quiet contemplation but this did nothing to detract from the enjoyment of listening to our knowledgeable and patient guide who (despite several interruptions!) expertly pointed out some of the most interesting details within the Cathedral. The original building was completed in 1258, and the addition of a tower and spire has caused visible bending to the structure, requiring strengthening by flying buttresses and strainer arches.

Other artefacts of particular note were the mediaeval clock dating from 1386, and thought to be the oldest working clock in the country, the ship's bell from HMS Salisbury, which was used as a font whenever a child was baptised aboard the ship and the huge Father Willis organ installed in 1887 and containing 3600 pipes. More poignant symbols were the dark yet striking Prisoner of Conscience window at the eastern end of Trinity Chapel, and the glass prism in Morning Chapel. This revolving prism was engraved as recently as 1985 by Laurence Whistler, in memory of his artist brother Rex Whistler who lived in the Cathedral Close, and who was killed in action in Normandy in 1944 whilst leading his squadron of tanks.

The last visit we made inside the Cathedral was to the Chapter House, where we queued to inspect one of the four surviving copies of the Magna Carta signed by King John at Runnymede in 1215. As our guide explained, John was such a bad King that our Country has never since had another one by that name.

There was just time for a group photograph and a pleasant lunch in the patio garden at Bernieres before we made our way into The Redcoats museum for the afternoon section of our outing. The museum deals primarily with the history of the Royal Berkshire Regiment and as a former member of the Regiment, I was delighted to have the opportunity to reacquaint myself with the information and displays that recall glorious episodes in its long and distinguished history. The opening showcase, topically features the D-Day invasion, when the 5<sup>th</sup> battalion fought its way towards Bernieres - hence the name of the restaurant - but the remainder of the museum is arranged in chronological order. Our party was able to move through the rooms at our own pace, and learn about the Battle of Brandywine Creek (1777) when soldiers who had fought in the battle wore red-dyed feathers to distinguish themselves. That symbol continues to this day in the wearing of the red flash behind the cap badge of the amalgamated Royal Gloucestershire, Berkshire and Wiltshire Regiment.

The Berkshires also fought bravely in the Crimean War, and the gallant last stand at the Battle of Maiwand in 1880 is commemorated by the Maiwand Lion in the Forbury Gardens in Reading. The museum tells the story of how the outnumbered soldiers fought against the Afghan tribesmen until only two officers and nine other ranks were left alive. The 'Last Eleven stood back to back continuing to fire' until the last of them fell. The only survivor was Bobbie a small mongrel dog and the Regimental Mascot. He was wounded but eventually returned to base camp, was brought back to England and decorated for his bravery by Queen Victoria. His stuffed body complete with Afghan Medal has its own showcase in the museum.

Other sections tell the story of the Royal Berkshires in the Boer War, the horrors of trench warfare in World War One when almost 7,000 Berkshiresmen were killed and World War Two, when six battalions of the Regiment saw active service in France, North West Europe, Italy, Sicily and Burma. There are also displays containing information and memorabilia from the post- World War Two period covering the National Service era and the conflicts in Cyprus, Northern Ireland and more recently, Kosovo.

Our final visit was to the Medal and Silver room, where we saw the medal groups awarded to the three Berkshire soldiers who have won the Victoria Cross: Private House (1900), 2<sup>nd</sup> Lieutenant Turner (1915) and Lance Corporal Welch (1917) as well as many other awards which symbolise the proud history of our County Regiment.

At the end of the museum tour some of our party walked into Salisbury to look at the shops, one or two noticing the armed police presence outside the residence of the former Prime Minister Sir Edward Heath, which adjoins the Wardrobe in Cathedral Close. Colonel Chilton, John Chapman and I took the opportunity for a walk around the beautiful, but seriously underused Museum Garden, which runs down to the river Avon with views of the famous Water Meadows. We talked about ways in which the museum can be made more accessible, to school parties in particular, but

also to the general public, as it is seriously underfunded and needs to attract many more visitors.

I am sure that all Project Purley members who enjoyed such an interesting day will be pleased to recommend The Wardrobe Military Museum as the focal point of a visit to a city rich in history. Our thanks go to John Chapman a Museum Trustee, for making all the arrangements for the outing.

*David Downs*

## **THAMES VALLEY POLICE**

In my last piece for the magazine I talked about new powers to deal with anti-social behaviour that my team were set to test for the first time in Tilehurst.

Since 1 June officers have had powers under the Anti-Social Behaviour Act 2003, which allow them to disperse groups of two or more in certain areas around Knowsley Road and Overdown Road. I am sure some of you will have read the fairly positive coverage in local newspapers and I am pleased to say that we have had a lot of encouraging feedback from both the local residents and business people.

We will be continuing to monitor the effect these dispersal order powers have on the local community but hope they continue to be a useful tool for officers working to improve the two areas by combating the behaviour of a minority of young people.

These areas will be subject to the powers until December, when the situation will be reviewed.

A meeting between myself and representatives from parish councils and schools at Calcot at the end of May was very positive. I wanted to meet with community representatives in this way to begin the process of setting up closer links between us. I believe this is key to encouraging better engagement from people in the way their community is run.

The next step is to set up Neighbourhood Action Groups made up of representatives from the parish, town and county councils, police and local residents. These groups will work to establish the best way of prioritising and dealing with issues raised by the communities.

This way of working has been very successful in Burghfield where we have been trialling the National Reassurance Programme and I am keen to extend the ideas to other areas in the Pangbourne sector. Communication and the support of everyone who has a stake in the community are essential for the success of an idea like this, so I am encouraged by the positive response so far.

*Insp. Andy Talbot*

# PURLEY PARISH NEWS

---

**EDITOR:** Matthew Slingsby  
24 Skerritt Way, Purley on Thames, RG8 8DD  
Tel: 0118 961 5585 Fax: 0118 961 5125  
Email: purley.parishnews@ntlworld.com

**ADVERTISING:** Liane Southam  
27 Waterside Drive, Purley on Thames, RG8 8AQ  
Tel: 0118 942 8243  
Email: adverts@stmarythevirgin.fsnet.co.uk

**CIRCULATION:** Les Jamieson  
58a Wintringham Way, Purley on Thames  
Tel: 0118 941 2342

I welcome all contributions to this magazine, particularly on local issues and events. Contributions can either be delivered in writing or by email. Please note however, I reserve the right to edit contributions to suit space availability and to maintain consistency of style (font etc). Local event adverts can be accommodated but space is limited; landscape format copy is preferred in this case as it allows a ½ page entry to be published.

Comments and opinions expressed in this magazine do not necessarily reflect the views of the Editor or the P.C.C. of St. Mary's Church, Purley on Thames – publishers of Purley Parish News – nor is any endorsement of the products and services of our advertisers implied by their inclusion.

**This magazine is published on the first Saturday of each month (except August). The price of each issue is 35p with a discounted annual subscription price of £3.50 for eleven issues.**

If you are new to the area and would like to subscribe to Purley Parish News, please contact the Circulation Manager, Les Jamieson.

This edition published	4 September 2004
Next edition paper copy to be received by	15 Sept 2004
Next edition "electronic" copy to be received by	22 Sept 2004
Next edition published	2 October 2004

Cover image © Laura Alvarado, CrossDaily.com (used under licence)

Purley Parish News is printed by Richfield Graphics Limited