

PURLEY PARISH NEWS

SEPTEMBER 2005



Let us fix our eyes on Jesus, the author and perfecter of our faith...

Hebrews 12:2

35P

For the Church & Community of
PURLEY ON THAMES



ST. MARY THE VIRGIN PURLEY ON THAMES

CURATE

Rev. Jean Rothery
"Oaklea", Tidmarsh Road
Tidmarsh
Tel: 0118 984 3625

CHURCHWARDENS

Lorna Herring
Tel: 0118 942 1547

John Rothery
Tel: 0118 984 3625

RECTOR

Rev. Roger B. Howell
The Rectory, 1 Westridge Avenue
Purley on Thames
Tel: 0118 941 7727
Email: rbh@bradean.fsnet.co.uk

ORDAINED LOCAL MINISTER

Rev. Andrew Mackie
12 Church Mews
Purley on Thames
Tel: 0118 941 7170

CHURCH HALL BOOKINGS

Lorna Herring
Tel: 0118 942 1547

BAPTISMS, WEDDINGS AND FUNERALS

All enquiries should be made to the Rector

www.stmarythevirgin.fsnet.co.uk

FROM THE LOCAL MINISTER

I am late writing this. I blame the technology – my electronic reminders stopped too early. I'm pretty sure that the Editor will blame the operator of the technology (me) for giving him palpitations as to whether this contribution was ever going to arrive. I suspect that he will have little sympathy for the palpitations I had on the way home tonight when I suddenly realised that I hadn't started to put pen to paper!

Many of us spend much of our lives driven by deadlines. Working in the 9-5 world, I complete a timesheet each week to record how I have spent all the hours given to my employer. With reasonable success most of the time, I prioritise my work based on doing today what will be most noticed by my boss if it isn't on his desk (or in his Inbox) tomorrow. Even balancing what I read or write on the way home on the train is based on when I am next working with the young people of our congregation or leading a service or preaching.

But time isn't the really important thing. We all have the same number of hours in each day, the same number of days in each week, whether we are in secular employment or busy looking after a family or enjoying retirement – although I have no idea how most of the retired people I know ever found time to go to

work! What is really important is how we use that time. People, and the relationships we have with them, and the time we make for these people, that's what's important.

During August this community lost someone who spent lots of her time serving others. Over the years my children benefited from the love Edi Glover showed them. I know that she spent lots of hours caring for many, many others, even when she was ill and in pain over the last years. She has been missed, and in our thoughts and prayers, private and public, during her prolonged stay at the Duchess of Kent. And as I write this, my thoughts and prayers are for Dave and the family.



A few years ago now, we had a series of interviews with members of the congregation at St. Mary's about what they do during the week. One of the first was with a GP. One question he was asked was what we could do to support him in his work. His answer was that we could form better relationships with those who live alone in our community.

Although I've remembered that since then, I've never done anything about it. In fact, if I look at how my life has changed since I first heard these words, I probably spend more time than ever in the workplace. I know better and spend more time with many people in the workplace than in the community of Purley on Thames – that's part of the strength of being a Local Minister who is in secular employment, but also part of the challenge.

Part of the strength of St. Mary's, I think, is that if you are living alone then Hands of Friendship on a Tuesday afternoon and the services on a Sunday (and the tea or coffee between the morning services) and taking part in one of the groups that meet in somebody's home all offer opportunities to form new relationships. My mother will, in a few days, move to Purley on Thames from Scotland to strengthen these relationships. Won't you come to the end of St. Mary's Avenue to do likewise?

*With best wishes,
Andrew*

PARISH REGISTERS

BAPTISMS

26 June Eve Martha Rowlands
24 July Megan Liane Southam

WEDDING

29 July Paul Horwood and Victoria Thomson

FUNERAL

24 August Edith Glover, aged 86 years

CHURCH SERVICES

4 Sep	9.30am	Family Worship
	11.15am	Holy Communion
	6.00pm	Holy Communion
11 Sep	9.30am	Family Worship
	11.15am	Holy Communion
18 Sep	9.30am	Family Communion
	11.15am	Morning Worship
	6.00pm	Evening Worship
25 Sep	9.30am	Family Worship
	11.15am	Holy Communion
2 Oct	10.30am	Harvest Thanksgiving for all the family
	6.00pm	Harvest Communion
9 Oct	9.30am	Family Worship
	11.15am	Holy Communion
	3.00pm	Community Memorial Service



The next meeting is on Tuesday 20 September, at 8pm in St. Mary's Church.

Christians living in Purley may worship in different places on Sundays, but we belong together, and this community is our home. Come together to pray and meet some other members of your worldwide family who live in the area.

If you would like further details, please contact:

Sally Robertson	962 5978	sally.a.robertson@ntlworld.com
Chris Rayers	942 1880	c.rayers@talk21.com

COMMUNITY MEMORIAL SERVICE

Annual Community Memorial Service will be held at St. Mary's Church on Sunday 9 October at 3pm – followed by refreshments.

This service is designed for all who have been bereaved recently or more distantly. It is an opportunity to remember loved ones and give thanks for their lives. Special invitation cards are being sent out, but all are welcome.

ADVENT FAIR

This will be held on Saturday 19 November in St. Mary's Church Hall.

There will be the usual stalls, and any gifts would be gratefully received. If you have books you no longer want, contact Roger Howell (941 7727) and he will gladly collect them from you.

AUTUMN LUNCHPOT

Enjoy lunch with the community at this popular event

Friday 21 October, noon – 1pm
St Mary's Church Hall

All your favourites will be there for you to savour whilst enjoying a chat

Soup Jacket Potato Ploughmans Cakes and a Cuppa

Lunch will be £4 per adult (Children's Lunch £2 per child)

Tickets in advance only please

ALL WELCOME : BRING YOUR FRIENDS

Contact: Nicki Woodward 984 2112
(all proceeds to St Mary's Church)

END OF THE SUMMER!

The children are now beginning a new year at school after a long summer holiday. Some parents will be sighing with relief because the arduous task of keeping the children amused is over, while some will be sad that the time of enjoying uninterrupted time with their offspring is ended.

How often were the days of summer broken with the calls of "I'm Bored!?" The pressure to make this time happy every moment is intense for many. I'd like to suggest that times of having nothing to do are a normal and often useful part of growing up. For it is at these times that we are forced to look to our own resources and become creative about what would be fun. My family felt no need to keep me amused all summer so I had to devise my own schemes. It was totally engaging to devise a show that was to be performed in someone's garage at a small cost to each member of the audience. With what diligence we all rehearsed our acts and hunted out costumes and props. On another occasion my brother and I decided to "live" in the sofa for the day. It took ages to gather books, torches, food and sweets, enough to last many hours until our mum returned from work to find a big sheet draped over the sofa, pinned all round to enclose two children who by then were fed up with each other's company. Another child I knew spent the whole holiday reading up on how to make a telescope then seeking out a suitable cardboard tube from the stationer and a lens from the optician. He managed to make a passable instrument which fired a lasting interest in astronomy.

Time alone is a time of self-discovery. We all need it, especially children. So parents, ignore the media pressure to keep your children on an endless treadmill of organized activities. Leave them to themselves at times and they might amaze you with how creative they are in the way they choose to spend their free time.

Dorothy West

MESSAGE FROM HOME FARM

Have you noticed the many different sizes of bales in the fields this harvest? Every baler manufacturer has brought out a range of machines, all of which make larger, denser and therefore heavier bales. The advantage of course is that the fields are cleared of straw much faster; finding a use for them is more of a problem. They are ideal for burning in a power station for example but not very convenient when bedding down a stable or calf pens.

Our harvest has gone very smoothly this year with reasonable yields of both barley and wheat. The wheat being the first cereals we have grown on Home Farm since arriving here 22 years ago. We bale all our straw with a conventional baler, far more work but when in the barns has a higher value as it is more usable. We also bale for neighbours as fewer farmers have this type of baler but all require a few small bales. Rather than saying old fashioned, I prefer a rare breed!

Talking of rare breeds, Josephine farrowed last night but only produced 3 gilts (girls) and 3 boars (boys). I brought my first sow some thirty five years ago out of Thame Market. She was heavy in pig, and produced and reared 12! A local old sage of a farmer told me to get out of pigs straight away as would never have a better breeding record. To be viable you have to average double figures per litter, no wonder the Gloucester Old Spot is becoming rarer.

With regard to the "other matter", I have promised not to comment publicly at the moment. However I have learnt what a dirty game politics can be, with newspaper reporting not far behind. When the dust settles I will let you know what was actually said and the points I was trying to make. Until then I will remember the few that have tried to put a knife in my back for purely political reasons but also the many folk that have supported me. Resign...I think I would be lynched if I even considered it!

Tim Metcalfe

COMMUNITY HARVEST SUPPER

**Saturday 24 September at 7.30pm
The Barn, off Beech Road**

Entry by ticket only: Adults £6.50 – Children £3.00

Proceeds to Duchess of Kent House Trust

Tickets available from The Post Office, or The Rectory (941 7727)

After the meal there will be musical entertainment

GET YOUR TICKETS NOW!

TRIP TO BOURNEMOUTH

Unfortunately the day trip to Bournemouth has been cancelled due to lack of support – many thanks to all those who tried to book a place.

Sally Robertson

PURLEY PLAYERS

Present a Murder Mystery Evening

“THE TANGLED WEB”

Saturday, 29 October 2005

7.00 for 7.30pm prompt

The Barn, Goosecroft Road, Purley on Thames

Tickets: £14.00 to include a three course supper

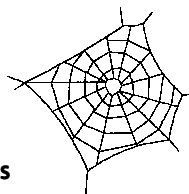
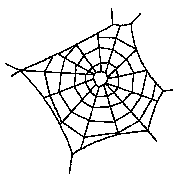
Please bring your own drink

Box Office opens: Monday, 19 September 2005

Tel: Mike Adnett on 0118 962 5760 Email: mike.adnett@ntlworld.com

Tickets on a first come first served basis

www.purleyplayers.fsnet.co.uk



WEST BERKS SCRABBLE CLUB

On Sunday 26 June we were invited to participate in *Crafts in the Park* held at Bucknell's Meadow – the event was organised by St Mary's Church and others. The weather was perfect for such an occasion with full sun – in fact it was scorching hot. Well done to the organisers for not forgetting the necessities for such an event - vendors of ice cream and soft drinks.

We pitched two long tables between “art and lace”, these tables nicely accommodating four Scrabble boards. There we sat inviting passers-by to play a few moves on the boards. In fact I think it's true to say that all participants finished their games. Our thanks go to Sylvia and Dennis, two of our members, who helped throughout the afternoon.

We met some very nice people - all village folk – who said they, (or maybe their mother), would possibly be interested in coming to the Club. We hope to welcome you all sometime very soon.

We meet on Tuesday evenings 7.30-10pm and Thursdays afternoons 2-5pm at The Barn. If you would like to know more about the Club, please telephone Ian or Elizabeth on 984 5045.

PURLEY PATHFINDERS

A WALKING GROUP FOR LADIES

We have spent much of our summer walks looking out for wild flowers, to follow our theme for the year. We have not been disappointed, spotting a wealth of wonderful species along our paths.

In June we were especially looking forward to walking amongst the fine display of orchids on Walbury Hill. Under a moody sky we set out from Inkpen through a lush avenue of trees, to find ourselves passing the imposing Walbury House, framed by an avenue of trees. A hare, startled by our approach, ran off through a field, as we made our way to the church. Here we enjoyed the colourful church garden, set out in a cross radiating from a covered seating area at the centre. Each of the four areas had been planted in different colour schemes, to good effect. We smelt the June roses and enjoyed the flowers before entering the church. As we continued our walk, we were unfortunate in that rain began to fall amidst the rumbles of thunder and flashes of lightening. Sadly it was decided that Walbury Hill would be too exposed, so for the safety of the group we studied the map and found an alternative route. This proved very pleasant, and we were impressed by the amount of wild flowers flourishing in the hedgerows. The rain came and went, and spirits remained high as we enjoyed the pleasant scenery. After helping a loose sheep to rejoin its anxious lambs in their field, we made our way back to the George and Dragon for lunch.

With the closure of Buckholdhill pick your own farm, this year our annual 'Wimbledon Walk' took place in a different area. We began from the pretty village of South Stoke, and after making our way past the lovely cottages of the village, we joined the Ridgeway Path, soon to find ourselves beside the River Thames. The areas surrounding the footpath were more lush than we had ever seen them, and we delighted in the profusion of wild flowers, too many to mention here, but we particularly enjoyed the flamboyant meadow sweet, the wild geraniums, and the purple thistles. Across the water we spotted various distinct buildings of Moulsoford before leaving civilisation behind to find ourselves immersed deep in the lush countryside. We breathed in the beauty of it all until civilisation returned once more in the form of the church at North Stoke. Here we took our break, exploring the old churchyard where we discovered the grave of the famous singer, Clara Butt, and a wall plaque dedicated to a member of the Cecil-Aldin family. We continued, moving away from the river, to take a path between fields of crops, where field poppies made an attractive edging. Further on, the more usual farm crops were replaced with fields of opium poppies. Lilac heads bobbed alongside large poppy seed heads, their billion treasures within waiting for collection upon ripening. On returning to South Stoke we made our way to Hildred Fruit Farm where we sprawled on rugs spread on the grass to eat our picnics, before picking punnets of juicy fruit for afters. Of course we reserved plenty of traditional English strawberries to take home to enjoy whilst watching the tennis on TV – Yum!!

A visit to the Wild Flower Farm was a must during our wild flower themed year. So, on a sunny July day we arrived at this special 'farm with a difference'.

Instead of the usual crops to be found, here Bob Anderson, the farm manager, led us around one area after another, each oozing with 'Englishness'. Ok – so it may not be a word found in a dictionary, but then, this was not a sight seen in any farming magazines either! We walked through areas planted to produce wild flower seed for conservation and for sale. Happily, over recent years, many of these seeds are being bought by councils which have discovered the joy of verges ablaze with native wildflowers. We saw, en masse, ox-eye daisies, musk mallows, corn cockles, cornflowers, yellow rattle, field scabious, and many more of our wonderful native wild flowers – fabulous! As well as producing wild flower seed, the farm is also committed to providing for the wild life which visits the farm. We were shown several ways in which wild life is helped, including log piles, hedge planting, and various other shelter belts. A wide headland has been left at the top of the farm, and the wild flowers growing here provide the perfect feeding ground for butterflies, attracting 24 species! Towards the end of the tour we were treated to a walk through an area of which Bob is obviously proud – a vast Wildflower Meadow. This meadow was full of numerous species of wild flowers – what a sight to behold! Bob stood in the meadow and reached out to pick many varieties, testing our memories of flowers seen earlier in the tour. If we were in any doubt, after our lunch in the butterfly area beside the dragonfly pond, we were free to wander through the Wild Flower Garden where 150 varieties grew in labelled beds. The farm also boasts plantings of every kind of native shrub! The Visitor's Centre held interesting pictorial exhibits for us to explore, and many of us left with wild flower plants under our arms, ready to turn a part of our gardens into our own special wild flower area – wonderful!

Our next walk found us in the lovely Chiltern village of Ewelme. After walking along the High Street, we decided this should be renamed, 'Hollyhock Street', as all the cottage gardens were full of these amazing blooms, along with other cottage garden favourites. We walked beside the old Watercress Beds which, according to one of the elderly residents, had been started by his grandfather in the late 1800's. This area is now a nature reserve for numerous varieties of wildlife and wetland birds. We noted a new

centre, opened in July 2004, which holds open days at the watercress beds so everyone can enjoy this special place. The village itself is obviously very old, and we delighted in spotting clues to its past as we walked beside The Old Bakery, Forge Cottage and Watercress House. Further along the village we came to the Village Hall where the exterior wall has been covered in many plaques depicting village life in Ewelme at the start of the new Millennium. At the sound of children's voices, we thought what lucky youngsters, happily playing in their



thatched playschool! We arrived at Ewelme Primary School, built in 1437, and claiming to be the oldest church school. Alongside it a path took us to The Almshouse. Here 13 houses are set around a courtyard. These used to be thatched, and are the earliest brick buildings known to exist in England. Reading the history of Ewelme is like reading a history book as familiar names crop up, remembered from history lessons at school! The village has strong links with the



Chaucer family, and, once inside the 15th century church, we found the tomb of Alice Chaucer, granddaughter of the poet, Geoffrey Chaucer. Alice had married William de la Pole (who was in charge of the boy king, Henry VI) in an earlier church on this site, the 14th century tower of which still remains. Their son had married Elizabeth Plantagenet, daughter of Richard 111 – told you it's like reading a history book! After exploring the beautiful church, we

left by way of a path which passes the grave of Jerome K Jerome of 'Three Men in a Boat' fame. Our walk now took us out of the village into the surrounding countryside where poppies edged fields of crops. It was exhilarating on this warm day to walk between one field after another, our footprints added to ancient paths such as The Swans Way, The Icknield Way, and The Chiltern Way. Our view stretched to another historic point – Wittenham Clumps, standing distinct on the skyline. Back in the village we found the village pub where we enjoyed lunch in the garden. The pub's dog came to say 'hello', hopping along on three legs. It is currently taking part in an episode of 'Rosemary and Thyme', and has been in other films too – perhaps another historic figure of the village in the making!



Our last walk of the term was our Summertime Special. After a scorching few days, we were relieved when we gathered in the village on a lovely morning, registering several degrees cooler than of late. We boarded our coach and soon we arrived at Abingdon. Here we settled aboard a spacious Salters Steamer, ready for our two-hour cruise to Oxford. After passing through Abingdon Lock



we soon found ourselves travelling through a lush, meandering landscape. All manner of water birds dived beneath, or glided upon the shimmering water. The riverbanks burgeoned with water loving plants, making an attractive scene. One of the crew made coffee for us, while another gave us an interesting commentary on the sights as we passed them by. All too soon our trip ended, and, at Folly Bridge, we disembarked, ready

to start our waterside walk. We began with the Thames Path, passing under the ornate Gas, Light and Coke Bridge, built in 1886 to connect the city to the former gasworks. Luckily for us the gasworks have been replaced with the Grandpont Nature Reserve. Further on we walked through Osney Lock, pretty with its floral displays, and on to Osney Bridge. From this busy bridge we soon rejoined the peacefulness of the Thames, as our route became more and more rural. As the Thames flowed on one side, a pretty stream joined us on the other, both making their way between banks abundant in attractive wild flowers. Eventually we left the Thames to enter Port Meadow. This is the most ancient part of the city, and is now an important botanical site, especially as it is the last site supporting 'creeping marsh wort'. We enjoyed the pleasant 'Willow Walk' beneath the trees and beside a pretty stream full of water lilies. After leaving the meadow we

joined the towpath of the Oxford Canal. The canal was completed in 1790, and the buildings of Lucey Ironworks at the beginning reminded us of the importance of the canal in times gone by. Now it gives much leisure enjoyment to many, highlighted when we passed the busy Boatyard of Jericho. The 1796 Isis Bridge carried us over the canal, and soon we found ourselves walking within and interesting and colourful community of houseboats, moored alongside their pretty gardens. Arriving back in the 'City of Dreaming Spires', there was just time to indulge in a cream tea in a local café, before taking the train back home.

Our trip was not the final meeting for the term, however, as, on 21 July a large number of Pathfinders gathered at Mapledurham Lock for coffee and cake. Excitement mounted as we awaited the flamboyant arrival of the Swan Uppers. In ceremonious fashion they appeared in their six skiffs, dressed in the blue or red uniforms of the Vintners and the Dyers. With four surviving cygnets at the lock this year we watched with enthusiasm as the boats were skilfully arranged around the birds, ready to guide them to shore. Once out of the water they were checked, weighed and ringed, before being released back on to the water – a colourful and nostalgic spectacle on which to end the term.



We continue our search for wild flowers in September during walks around Wallingford, along The Lambourne Valley Way, and up Ladle Hill. Also, there is more excitement brewing amongst the group as we prepare for a visit to the gardens of Highgrove, by kind invitation of His Royal Highness, The Prince of Wales. This is sure to be a thrilling experience. If any ladies

would like details of the next programme then please give me a ring. Walks vary mainly from 4 to 6 miles, and take place on various weekday mornings. You will be made very welcome by myself and my wonderful group of friendly ladies!

Nicki Woodward
984 2112

FARMERS MARKET ARRIVES IN PURLEY

Purley on Thames hosts the first Farmers' market in the village on Saturday 10 September in the Barn at Goosecroft Lane (off Beech Road) from 9am until 1pm. Organised by the *Thames Valley Farmers' Markets*, the market will have a wide variety of local produce from traders on sale. The Purley market will be held monthly in the Barn on the second Saturday of each month. The dates for the rest of the year are the 8 October, 12 November, and 10 December. This is a major achievement arising from the Village Plan. Over a half of local residents surveyed for the Village Plan stated they would like to see a Farmers' market held in Purley. Please tell all your friends and turn up to support this exciting venture.

PURLEY GOES ON LINE

Purley now has its own web site. Visit **www.purleyonthames.net**. The Parish Council has set up a web site which will report not only on its meetings and activities but also provide local news and information on events and meetings in the village. The site was designed locally by Denefield School Enterprises and sixth form students helped design the site. The website was one of the key recommendations from the Village Plan with the aim of trying to improve local information about what's going on in Purley and also develop a sense of belonging for those living in the village. Over two thirds of residents surveyed said they would use a Purley web site. The site will develop over the coming months and become a genuine community resource. We would like to have your feedback about the site so we can improve it to cater for your needs. Please visit the site and tell us what you think.

PURLEY W.I.

Forgive me if I use this column to report worldly events, but one can't ignore the London Bombing on Thursday, 7 July and we cast our minds on all concerned. You have to fight for peace, don't you and sadly the results can be painful. Our thoughts go to the Tilehurst family who lost a daughter.

Another drama at our meeting was the heat; with windows and doors open we sat in the Memorial Hall and prayed for a breeze. Life goes on!

Birthday poses were handed out and I'm going to praise the people who, every month, provide these stunning flowers. It does take the pain out of yet another year gone by.

We were overjoyed at the profit made from manning our stall at the Pangbourne Fete, but then W.I. cakes always "go", don't they? Thanks to Sybil Pryor for allowing us to share her "free spirit" garden for a coffee morning - profit to ACWW (and their Water Wells for the Third World appeal) and, again, we were happy with the takings. We then attended a Cream Tea Garden Party in the garden of Marilyn Hoare. We were concerned about the deluge of rain at 2 o'clock but the sun arrived at 2.30 and a handsome profit was made yet again. We added a touch of fun to the gathering by wearing something flowery and made it into a Country Garden theme, so Ascot type hats were the order of the day. Marilyn's charity called "Bubbles" gives families of handicapped children a holiday trip. Thank you ladies for helping at all these functions and for dipping into your purses so generously to provide a gleam of happiness where it is needed. Pam Jamieson won the most attractive hat event - super.

We are trying to plan a coach trip using up unused bus tokens - plans are under way.

The Horticultural Show is on Saturday, 10 September at the Memorial Hall, Purley. I know I'm always nagging about this Show but, if you obtain a programme from the local Horticultural Hut, you will appreciate how easy it is to

participate! Come on ladies, you know you can cook, so have a go in this section. The reason I persist, is because it is important to support village activities and it only takes an hour to call in. Don't let us down!

Our demonstrator this month was our own Lesley Honnor. She worked hard to provide us with the necessary materials for a craft evening. We started with a card so as to build up a collage picture, along with different coloured and textured paper. Now, if you have never created such an article, your face can go white with fear, but the finished creations were stunning. Now I'm not saying we would exhibit in Tate Britain, but Tate Modern watch out! Thanks Lesley for a real fun evening, and for keeping us quiet!

The 2006 W.I. Calendar was on sale and photographs for this were of local buildings. Member Marion Warden's entry appears so well done Marion. She is very pleased to confess to her son that she has "made it" as she has appeared in a W.I. Calendar. I like it!!!

Flower Competition:	1 st Dorothy Viljeon and Sylvia Conquest 2 nd Bernardine Perry
Competition: Grotty Seaside Souvenir. Yuk!	1 st Daphne Howard 2 nd Shirley Lewis
September:	Speaker R.B.Cews on Birds of Berkshire. Competition Bird photograph Stall Miscellaneous packets of seeds

No meeting in August so we hope you had a restful holiday and that you remembered your sun lotion.

The next meeting will be on Wednesday, 14 September at 7.30pm at the Memorial Hall, Glebe Road, Purley. Visitors always welcome.

Sylvia Conquest
941 1936

Greenham Common Community Trust Grants Available

The Trust has two categories of grant aid: Standard (up to £9,999) and Major (£10,000 and over). If you would like to apply for a grant from the Trust for 2006, application forms will be available in September 2005 with a closing date set for December 2005.

For further information or an application form please contact Melissa Elliott on 01635 817445 or e-mail melissa@greenham-common-trust.co.uk.



PURLEY HORTICULTURAL SOCIETY

COACH TRIP



On Sunday, 26 June the Society visited the R.H.S. Gardens, Wisley and although when we arrived at the Gardens the weather was cloudy and on the chilly side, after lunch the sun appeared, to make it a very pleasant afternoon. I enjoyed the day very much and hope everyone else did also. The R.H.S. now have a buggy available (with a driver) to take the people around the Gardens who find walking more difficult. Quite a few of our party found this facility an advantage. I would like to take this opportunity to thank Jimmy Armstrong for arranging this trip.

LATE SUMMER SHOW

This will be held in Purley Memorial Hall, Glebe Road, Purley on Thames (not The Barn as previously advertised) on Saturday, 10 September, 2005. Entry forms must be handed into the Trading Shed or to Mr. J. Armstrong, 169 Long Lane, Tilehurst by Wednesday, 7 September. The Show opens to the public at 2.30pm to 4pm with presentation of trophies at 3.45pm

TRADING

The Shed in the Memorial Hall car park is open from 10am to 11am on Saturdays and Sundays until the end of October. If you find you are unable to get to the Trading Shed during the opening times, you may telephone your order to Alex Stott on 941 9186 or e-mail: vastott@aol.com.

I hope you have all had an enjoyable summer.

Marion Dabbs
942 2349

PURLEY ON THAMES PARISH COUNCIL



As mentioned in July, West Berkshire Council authorised the Parish Council to fill the casual vacancy, caused by the resignation of Christine Taylor, by co-option. This was considered at a recent meeting and it was agreed to appoint Roger Woodward and to invite the other candidate, Paul Sims, to also participate in the work of the Council.

The Council were delighted to hear that Purley on Thames were runners up in the Calor Berkshire Village of the Year Competition 2005 and thanks were recorded to Richard McDonald, who co-ordinated the entry, and members of local organisations who met with the judges on the day of their inspection. The presentation will be held at Arborfield Village Hall on 14 September at 7.30pm. Anyone wishing to attend should contact the Clerk without delay.

There are still a small number of allotment plots available and anyone interested is invited to contact Alex Stott on 0118 941 9186 or by e-mail: vastott@aol.com.

Current rents are £8 per half plot (£5 concession) but will rise in the future due to increased costs.

West Berkshire Council blue travel tokens expired at the end of August but may be donated to the Pangbourne Volunteer Centre who are able to redeem them until the end of September. Tokens taken to the Parish Office, or left in the mailbox, before 25 September, will be passed on to add to the previous donations valued at £398. Please support this local charity rather than disposing of them.

We have been asked to draw attention to the Community Furniture Project who will arrange for collection of any unwanted furniture. They can be contacted on 01635 43933 or details from their website www.cfpnewbury.org

As Reading Borough Council are now doing household recycling collections they have removed plastic banks from various sites in Reading. To compensate WBC have agreed to empty the plastic facility at Savacentre on a more regular basis. This facility is also provided at their Paices Hill, Aldermaston site.

WBC are now providing a Registration Service at Coopers House, Brewery Court, High Street, Theale on Tuesday afternoons between 1 and 4pm which will cover births, deaths & marriages.

The Parish Council have been consulted by British Telecom regarding the probable removal of the payphone facility at the junction of Purley Rise and Nursery Gardens and also Long Lane. There is no proposal to remove the facility from St Mary's Avenue at present.

Please look out for publicity for the new monthly Farmer's Market and also the launch of the Purley on Thames website.

Brian J. Smith
Clerk to Purley on Thames Parish Council

The office, located near the tennis courts, opens:

Mondays (not BH): 5.45pm to 8.30pm

Including an opportunity to meet

Councillors between 6pm & 7pm

Thursdays: 9.00am to 3.15pm

Barn Manager: Jean Chudleigh 07917 453187

Purley on Thames Parish Council

Parish Office

Goosecroft Lane

off Beech Road

Purley on Thames

Reading

RG8 8DR

Tel/fax: 0118 984 4507

E-mail: clerk@purleypc.wanadoo.co.uk

Christian  Aid
We believe in life before death

We would like to say a big "Thank You" to the residents of Purley who gave so generously to the work of Christian Aid this year. The final total collected during Christian Aid Week in May was £2085.83.

Pam & Matthew Slingsby



NEW SEASON WITH THE PANGBOURNE CHORAL SOCIETY

The Pangbourne Choral Society, under their Director of Music Darren Everhart, will be starting their 2005/6 season on Tuesday 13 September preparing for another rewarding season. This year's main event in February will see a performance of Carl Orff's exciting Carmina Burana. Also included in this season will be the Concert of Christmas Readings & Music in aid of the League of Friends of Reading Hospitals and a summer concert with a nautical vein with music by Delius, Stanford, Grainger and Vaughan Williams.

This follows their memorable 2004/5 season which saw the staged performance of Benjamin Britten's powerful War Requiem and concluded by joining with the Reading Symphony Orchestra in a performance of Mahler's Second Symphony at the Reading Concert Hall. [it was 'a musical experience not to be missed...' - Reading Chronicle].

So if you think you would be interested in joining this major local Choral Society for a very varied year's singing, go along to the inspirational Falkland Islands Memorial Chapel at Pangbourne College, their venue for concerts and rehearsals, on any Tuesday evening from 13 September and give them a 'no-commitment' look over! Auditions are not required (unless you have soloist aspirations) but commitment and dedication are expected.

If you would like more information e-mail pcs@musician.org or visit their website <http://www.pangbournechoralsociety.fsnet.co.uk>

YOUR INVITATION TO A

MAMMOTH MACMILLAN COFFEE MORNING

You are very welcome to come along with your friends to St Mary's Church Hall on **Saturday 30 September between 10am and 2pm** for Coffee & Much More!

There will be various stalls to browse over, including:

Plants & Produce

Cakes

Bring & Buy

Raffle

I am hoping to make this event a BIG fundraiser for the invaluable work done by the Macmillan Nurses, and would love to see as many of you as possible sometime during the event!

Entry, to include Coffee or Tea and Biscuits, will be by donation
(*min. £2.50 please*)

Hope to see you and your friends there!

Donations for stalls/raffle also greatly appreciated! If you can help for even a short time on the day, please contact me, Nicki Woodward 984 2112



PANG & KENNET VALLEY COUNTRYSIDE PROJECTS



The Friends of the Pang and Kennet Valley Countryside Project has been set up to represent all of the people who care about the countryside in the two valleys.

The events below are co-ordinated by The Friends and give you the opportunity to come out on practical tasks, learn new skills, meet new people and, above all, enjoy yourself. The tasks usually begin around 10am and finish by 4pm but you are very welcome to come for as much time as you wish to give during these hours. Please wear suitable footwear and clothing, and bring a packed lunch if you are coming for the full day. Hot drinks are usually provided, as are the necessary tools. Please phone the project office for further details of projects, meeting points etc, on 0118 930 5336.

FRIENDS' DIARY

Sun 25 Sept 1pm

Pangbourne Turnpike & Tank Traps – The Bottom End

Join Dick Greenaway for a 3½mile stroll to explore the ancient moors and coppices, old roads and World War II remains in the Pangbourne, Tidmarsh and Sulham area. Meet at the Pangbourne Working Mens' Club (SU 635 766) at 1pm. There are several stiles on this walk. Dogs on leads please.

Sun 2 Oct 1pm

Lambourn Farm Walk

Sheep Drove Organic Farm

An opportunity to view this state of the art organic farm with the Biodiversity Officer Jason Ball. This 2 hour walk will take in the Lambourn Downs and include a look at the reedbed filtering system to recycle water. Meet at Sheep Drove Organic Farm SU357816 (off Sheepdrove Road) at 1pm. To book call the Project Office on 0118 930 5336

Tue 4 Oct

Footpath Work

Bucklebury

Improve access in the parish by helping to clear encroaching vegetation on its 45 miles of off-road rights of way – but not all of them! Meet at the Black Barn, Rushall Manor Farm at 10.00 am.

Sat 8 Oct

Heathland Management & BHM AGM

Bucklebury

For all tasks meet at Angel's Corner, by the Scout Hut on Bucklebury Common (Grid ref. SU 550688) at 10am Contact Tim Culley for more details on 0118 971 4830

Tue 11 Oct

Assembling mink platform kits

Child Beale Park

Help to assemble platforms to detect mink to help in a water vole reintroduction programme at Child Beale Park and mink control on adjacent rivers. Meet at Child Beale car park SU 618 781(off the Pangbourne Road) at 10am

Tue 18 Oct

Veteran Tree Programme

Ashampstead Common

Join Dick Greenaway in setting up the Veteran Tree Programme for the Ashampstead Commons Committee by clearing vegetation around trees which have been selected to be VETERANS of the future. Meet at Ashampstead Common car park (SU 587751) at 10am.

Tue 25 Oct

Jennets Hill Coppice Hazel

Help Dennis Gower to restore semi-ancient woodland and cut stakes and binders for hedge laying. Meet at Black Barn, Rushall Manor Farm at 10am or phone the Project office for details of meeting on site.

Sun 30 Oct 1pm **East Iisley Sheep Fairs and Chalk Downs – the Top End**
Join Dick Greenaway for a walk around East Iisley and then up to the Ridgeway and back; about 5 miles (8km). There is a long hill on this walk. Meet at East Iisley Pond (SU 494 811) at 1pm. Well behaved dogs welcome.

Sat 5 Nov **Pond Creation** **Primary School Great Shefford**
(Postponed from August because of Planning Permission). Come and be part of an exciting project involving new technology to create a new wildlife pond at the school using geo-textile lining. This will enable the pupils of the school to use this important educational resource. Meet at 10am at Shefford CE Primary School.

Sun 6 Nov 1pm **Bring Your Bike** **Compton**
Join us for stunning views of the Downs. An 8 mile, mainly off road, cycle ride to look at the Downland north of Compton. Mountain bikes essential, helmets must be worn. Meet at Compton Downs Sports Centre (SU519 795) at 1pm. Ride leader Karen Davies. Please book your place.

Tue 8 Nov **Introduction to Coppicing** **Rushall Manor Farm**
Come and help cut binders and stakes for hedgelaying and restore maintain Rushall Manor Farms Bluebell Woods. New volunteers are particularly welcome on this event. Meet at Black Barn, Rushall Manor Farm at 10am.

Sat 12 Nov 7pm **Village Quiz Evening** **The Victory Rooms Bucklebury**
Come and test your memory and pit your wits against other teams at the 'Friends' Quiz evening. Tickets £10 per person to include supper. Cash Bar, Raffle and Prizes. Tickets available from Project Office. Please book early, as places are limited.

Sun 13 Nov **Heathland Management** **Bucklebury**
For all tasks meet at Angel's Corner, by the Scout Hut on Bucklebury Common (Grid ref. SU 550688) at 10am. Contact Tim Culley for more details on 0118 971 4830.

Tue 22 Nov **Footpath Work** **Bucklebury**
Improve access in the parish by helping to clear encroaching vegetation on its 45 miles of off-road rights of way – but not all of them! Meet at the Black Barn, Rushall Manor Farm at 10am.

Fri 25/Sat 26 Nov **Hedge laying Training course** **Rushall Manor Farm**
Come and have a go at hedgelaying in the picturesque Pang Valley. A trainer will be on hand to help develop and improve your hedgelaying skills. Meet at Black Barn, Rushall Manor Farm at 10am. Booking is required for this event through the Project office either £10 per day or £5 per day for concessions.

Sun 27 Nov 1pm **Yattendon Ancient and Modern – a Stroll around Yattendon**
An autumn stroll to look at the historic village of Yattendon and its state-of-the-art farming; slightly less than 2 miles (3km) some of which will be wet and muddy. There is one stile. No dogs please. Meet in the car park just outside the Square (SU 552 744) at 1pm.

Tue 29 Nov **Hedge planting** **The Malt House, West Woodhay**
Come and enjoy the hospitality of the owners and contribute to your local environment by helping to plant up new hedgerows in this delightful corner of the NWD AONB. Refreshments provided. Meet at 10am The Malt House SU396 638.

Sat 10 Dec **Heathland Management** **Bucklebury Common**
For all tasks meet at Angel's Corner, by the Scout Hut on Bucklebury Common (Grid ref. SU 550688) at 10am. Contact Tim Culley for more details on 0118 971 4830.

Sun 11 Dec**Hedge planting****The Malt House, West Woodhay**

Come and help restore and plant hedgerows to enhance the landscape and wildlife in this quiet corner of West Berkshire. This is an ideal opportunity to work off a few pounds in the run up to Christmas! New volunteers are particularly welcome to this event. Refreshments kindly provided by the owners. Meet at 10am The Malt House NGR. SU396 638.

Sun 8 Jan 2006**Heathland Management****Bucklebury Common**

For all tasks meet at Angel's Corner, by the Scout Hut on Bucklebury Common (Grid ref. SU 550688) at 10.00am Contact Tim Culley for more details on 0118 971 4830.

EMAIL NOTIFICATION.

An email notification facility for walks, talks and events has been put into place. If you wish to be added to the distribution list please e-mail pang.kennet@fwag.org.uk or phone the Project office on 0118 930 5336.

It is envisaged that the system will work by an e-mail being sent out to all participants, approximately one week before each and every event and task. We regret that it will not be possible for participants to opt out of e-mails regarding specific types of events.

The e-mail will be a group mail, which will list all recipients. The e-mail will be scanned by an updated virus facility and screened by the Internet service provider before despatch, but no responsibility can be accepted for any virus or corruption caused by its transmission.

THE U509 AND THE VANITY MIRROR

August 1942 - Berthing his T23 minesweeper alongside the SS *Baroda*, aboard which he had been a deck officer 10 years previously, my brother as the "little ship's" skipper and I toasted the navy. I then joined the old ship UK-bound.

My cabin's last occupant had been a Sub-Lt. Bryan Hildrew, who the captain remarked had been a brilliant student, now en route to join the *Warspite* which had been damaged at the battle of Matapan in 1941, also that he had enjoyed being given a dinner and bath in Cape Town. I then claimed that I'd been the host and that I knew all about his studying at Sunderland.

Late October 1942 - The *Baroda* after dropping depth charges and joining convoy reached Oban, where I went ashore. In November she sailed west, meeting severe Atlantic storms, losing all lifeboats, putting into Halifax for repairs, then the same again, so to New York, again repairs, so to Trinidad to revictual. Now south-east to Walvis Bay (Namibia). Finally off the Skeleton Coast near Lüderitz the U509 struck on 2nd April 1943. One lifeboat with one crew and 12 passengers capsized and were lost. Those in boats and life rafts were soon picked up but one boat with 44 souls made the desolate coast, being lost for several days until a passing naval vessel spotted the flashing in the sunlight of a lady passenger's handbag vanity mirror after the air-force had failed to find them.

Recently, 60 years later, wondering if Hildrew had survived the War, I found him in Who's Who. He was now a CBE with a London 1st Class Honours in

Engineering and a Lloyds Consultant in Marine Engineering. He and his charming wife entertained me to dinner at Pangbourne telling me that he had once lived in Goring whilst working on cold war submarine design at Aldermaston and had his meals at the Miller of Mansfield.

SS *Baroda*: 7,129 tons; built 1918; cargo with 120 passengers; trading on UK/India run; maximum speed 11 knots. One of Ellerman Bucknell's 82 ships lost in the War out of their fleet of 142. The U509 had six "kills" before meeting the same fate.

*An extract from: Testament of a Doctor – A Life of Contrasts
by Dr John A. Hofmeyr. Reprinted with permission.*

PROJECT PURLEY

One of the greatest British benefactors of the twentieth century was William Morris the founder of Morris Motors, and who was later created Lord Nuffield and lived at Nuffield Place near Nettlebed from 1933 to 1963. The comfortable but unpretentious upper middle-class home in which he spent those last thirty years of his life was the nostalgic venue for the summer outing by twenty four members of Project Purley on Friday, 17 June 2005.

Nuffield Place is not well sign-posted, but the compensation for my diversionary route to the meeting place came in the form of supportive navigating by Marion and Millie, the opportunity to travel down one of the Quiet Lanes mentioned by a previous speaker from the CPRE, and the sight of a couple of beautiful red kites circling and soaring above the South Oxfordshire countryside.

We assembled in the tea room for tea or coffee and biscuits at 10.30am and were given an introductory talk by Jo Gamester, our host for the morning. She told us that William Morris was born in 1877, was a champion racing cyclist in his youth and set up his own business building and repairing bicycles at the age of 14. He rented his own shop and barns as garages for undergraduates' cars, he also hired out cars he had bought and then turned his hand to car building, completing his first model in 1913. As his business flourished and expanded, he bought out several rivals and became one of the rich men not just in Great Britain, but in the world. Jo explained that during his lifetime he had donated an estimated £30,000,000 in charitable bequests, mostly to medical and educational foundations. Nuffield Place had been built in 1914 to a design by a pupil of Lutyens, and after he moved into the accommodation with his wife he added a billiards room, made the entire house lighter and larger and had it furnished and decorated in a style which is retained in the house to the present day.

After this comprehensive introduction we were at liberty to wander through the house as we wished. My small group visited firstly the kitchen, upgraded slightly to cope with the demands of catering for visitors, then moved upstairs to the new exhibition room, which contained an example of the iron lung manufactured at the Cowley works in Oxford, as well as photographs of houses in which William had lived before coming to Nuffield. Back downstairs we walked into the billiards

room, where apart from the games equipment, there was a glass display case containing cards attached to the flowers and wreaths which were sent to Lord Nuffield's funeral.

In the main sitting room there was the sound of 1930's music coming from a radiogram and this gave a surreal atmosphere to our tour. Nuffield Place has had no other resident since 1963, and the house exists in a kind of time warp, almost as if Lord and Lady Nuffield have just walked down the drive and across the road for a round of golf at the local course and are expecting to meet us on their return for a cup of tea. This feeling is confirmed by a visit to the dining room, where eight places are set for a formal dinner, and there is even a silver salver and a chair by the window. A small neat card says that this is ready for the drink of milk of magnesia given to Lord Nuffield by his secretary each afternoon.

Continuing our tour, we noted the smoking room containing a number of medals and statuettes, the exercise horse room and the maid's scullery. In its early life, Nuffield Place named this last room the butler's pantry, but the Nuffield's made do with just a live in housekeeper and maid as well as some daily helpers, brought in as the occasion demanded. When we moved back upstairs we looked round a number of bedrooms, and also a display of the ceremonial robes worn by Lord and Lady Nuffield at the Coronation of King George V1 and Queen Elizabeth in 1937. Intriguingly a Freedom Scroll of the City of Coventry, presented to Lord Nuffield on 10 December 1936, had the name of Edward V111 scratched through in red ink following his abdication, and rewritten with just "the king".

We were able to listen to some speeches, recorded by Lord Nuffield, and also watch him on video talking about his life and career. The impression was of a small unpretentious somewhat hesitant man, and despite his wonderful business acumen and limitless generosity, his life was put into perspective by a story told by our guide. She said that he was visiting one of the many hospitals he had endowed when he came to the maternity ward and saw a mother holding her new-born baby. To no one in particular he remarked, "I would have given all my millions for my marriage to have been blessed with a child".

There was just time for a quick walk around the four acre garden designed and laid out during the First World War, before the majority of our party left Nuffield Place and travelled a short distance down the main road to The Crown, an award winning pub and restaurant. Over an enjoyable lunch we were able to reflect on our outing which although very interesting, had included several moments of quiet reflection as well as nostalgia.

The next meeting of Project Purley will take place in the Barn, Goosecroft Lane at 8pm on 16 September. Project Purley members will share the excitement of being 'extras' in the filming of *Pride and Prejudice* at Basildon House.

David Downs

People are funny; they want the front of the bus,
the middle of the road, and the back of the church.



BERKSHIRE MAN HONOURED WITH NATIONAL BT AWARD

The Purley on Thames Cricket Club is prouder than ever of BT employee Martin Bishop this week. Martin, who regularly commits up to 55 hours a month to the club, was Highly Commended for his charity work at the 2005 BT Chairman's Awards. He was presented with the award by BT chairman Sir Christopher Bland on Thursday, June 30.

Martin received the commendation in the sport category of the awards, in recognition of his exceptional commitment to voluntary service. His dedication to developing the club, which has grown from one adult team to five teams of all ages, made his application stand out ahead of hundreds of entries from across the UK. He received the commendation at a ceremony held at the BT Tower in central London.



The annual BT Chairman's Awards scheme recognises and rewards the 'out-of-hours' commitment BT employees give to local voluntary groups and charities. In 2004-05, BT has supported its employees' charity work by awarding more than £190,000 to community organisations throughout the UK.

The club recently became only the second in Berkshire to achieve the England and Wales Cricket Board's (ECB) 'clubmark' certificate for its junior section. It operates a non-discrimination policy, accepting and encouraging players of all abilities, and also works with schools and other sports clubs in the community to get local children involved in cricket.

Martin said: "What a surprise and honour it is to receive this award. Everyone involved with the Purley on Thames Cricket Club is over the moon! We certainly put the money we received through the recent BT Community Champions Award to good use by training up two junior coaches to ECB level one standard - which will really help with the ever-increasing number of junior players."

Martin has been a volunteer with the club since 1979 and is now club chairman, junior coach, child protection officer and groundsman.

He uses many of the skills he has acquired at BT to continue to develop the club's work. He plans and manages projects, exercises financial control when required and has been instrumental in implementing the new and improved management structure.

Sir Christopher Bland congratulated Martin and everyone involved with the Purley on Thames Cricket Club. He said: "The amount of time that Martin devotes to this cause must be commended. His dedication and commitment ensures that local adults and children continue to benefit from the facilities the cricket club offers. Every year this award scheme demonstrates to me - as clearly as anything we do across the whole organisation - that it's the passion and dedication of our extraordinary people that makes BT so special."



PANGBOURNE & DISTRICT VOLUNTEER CENTRE

If you need help with transport, or know of anyone else who does, please contact us.

Volunteer drivers always needed! Do you have a few spare hours? Car drivers are needed to transport clients to hospitals, also for local journeys to doctors, etc. Help in the office is also required. Office opening hours: Mon/Wed/Thurs/Fri 9.30am to 11.30am. Please come and join us.

Call 984 4586 or pop into The Committee Room, Pangbourne Village Hall.

Purley Parish News

EDITOR: Matthew Slingsby
24 Skerritt Way
Purley on Thames, RG8 8DD
Tel: 0118 961 5585 Fax: 0118 961 5125
purley.pariishnews@ntlworld.com

CIRCULATION: Steve Corrigan
5 Menpes Road
Tilehurst, RG31 6GF
Tel: 0118 967 6061

SUBSCRIPTIONS: Les Jamieson
58a Wintringham Way
Purley on Thames
Tel: 0118 941 2342

ADVERTISING: Liane Southam
27 Waterside Drive
Purley on Thames, RG8 8AQ
Tel: 0118 942 8243
adverts@stmarythevirgin.fsnet.co.uk

I welcome all contributions to this magazine, particularly on local issues and events. Contributions can either be delivered in writing or by email. Please note however, I reserve the right to edit contributions to suit space availability and to maintain consistency of style (font etc). Local event adverts can be accommodated but space is limited; landscape format copy is preferred in this case as it allows a ½ page entry to be published. If specially preparing content, please set your page size to A5.

Comments and opinions expressed in this magazine do not necessarily reflect the views of the Editor or the P.C.C. of St. Mary's Church, Purley on Thames – publishers of Purley Parish News – nor is any endorsement of the products and services of our advertisers implied by their inclusion.

This magazine is published on the first Saturday of each month (except August). The price of each issue is 35p with a discounted annual subscription price of £3.50 for eleven issues.

If you are new to the area and would like to subscribe to Purley Parish News, please contact either Steve Corrigan or Les Jamieson.

This edition published	Next edition copy deadline	Next edition published
3 September 2005	17 September 2005	1 October 2005

Cover image © Edgar Alvarado, CrossDaily.com (used under licence)

Purley Parish News is printed by Richfield Graphics Limited