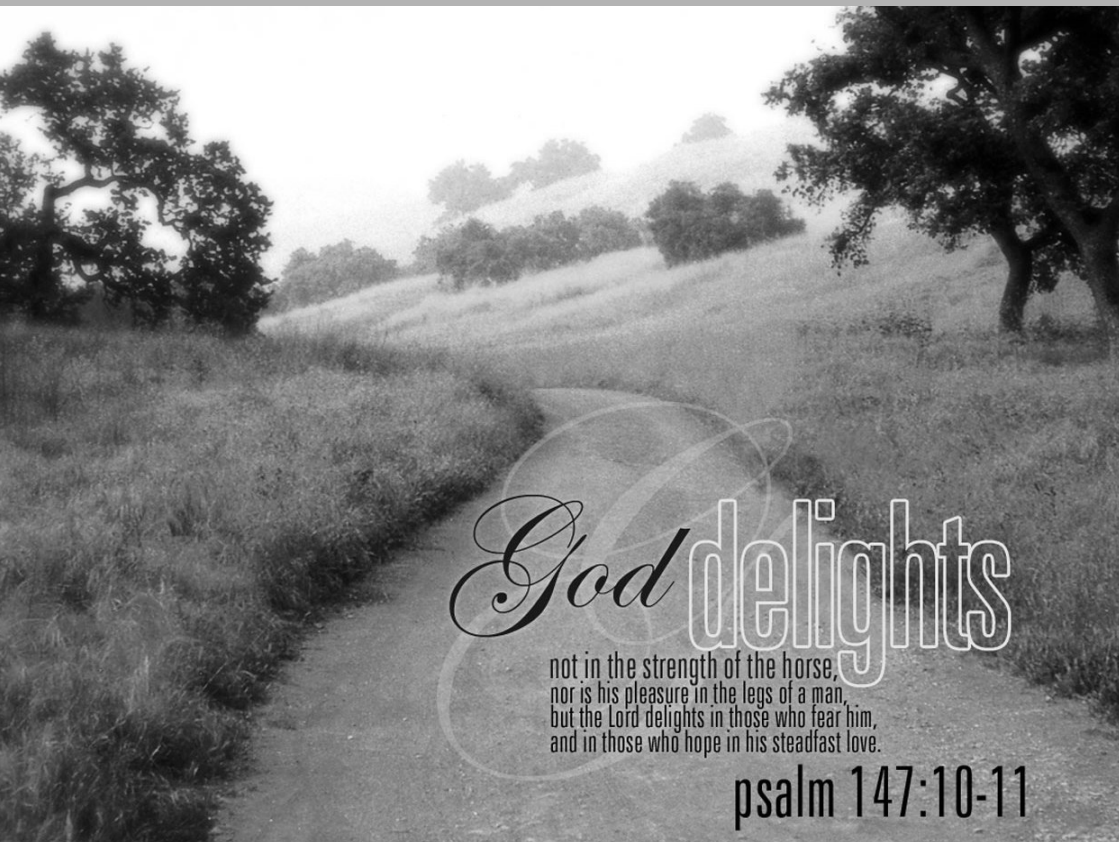


PURLEY PARISH NEWS



God delights

not in the strength of the horse,
nor is his pleasure in the legs of a man,
but the Lord delights in those who fear him,
and in those who hope in his steadfast love.

psalm 147:10-11

For the Church & Community of
PURLEY ON THAMES



St Mary the Virgin

Purley on Thames

www.stmaryspurley.org.uk

RECTOR

ORDAINED LOCAL MINISTER

Rev. Andrew Mackie
12 Church Mews
0118 941 7170

CURATE

Rev. Jean Rothery
Oaklea, Tidmarsh Road, Tidmarsh
0118 984 3625

CHURCHWARDENS

Mary Barrett
0118 984 2166

Debbie Corrigan
0118 945 1895

CHURCH HALL BOOKINGS

Lorna Herring
0118 942 1547

BAPTISMS, WEDDINGS AND FUNERALS

All enquiries to the Curate

This magazine is published on the first Saturday of each month (except August). The price of each issue is 40p with a discounted annual subscription price of £4 for eleven issues.

If you are new to the area and would like to subscribe to Purley Parish News, please contact either Steve Corrigan or Les Jamieson.

Comments and opinions expressed in this magazine do not necessarily reflect the views of the Editor or the PCC of St Mary's Church, Purley on Thames – publishers of Purley Parish News – nor is any endorsement of the products and services of our advertisers implied by their inclusion.

EDITOR

Matt Slingsby
24 Skerritt Way, Purley on Thames,
RG8 8DD
0118 961 5585
ppn@stmaryspurley.org.uk

DISTRIBUTION

Steve Corrigan
11 Mapledurham Drive
Purley on Thames
0118 945 1895

SUBSCRIPTIONS

Les Jamieson
58a Wintringham Way
Purley on Thames
0118 941 2342

ADVERTISING

Liane Southam
1 Bakery Cottages, Reading Road,
Burghfield Common, Reading
0118 983 1165 (before 6pm please)
liane.southam@virgin.net

PRINTING

Richfield Graphics Ltd, Caversham

COVER IMAGE

© Sam Kiser, CrossDaily.com

All contributions to this magazine at welcome, particularly on local issues and events. Copy can be delivered either in writing or by email. Please note however, we reserve the right to edit contributions to suit space availability and to maintain consistency of style (font etc).

Most common computer file formats are accepted, with the notable exception of Microsoft Publisher – sorry! When sending articles containing images, you may need to send the images separately, to avoid email size restrictions.

THIS EDITION PUBLISHED	3 MAY
NEXT EDITION COPY DEADLINE	24 MAY
NEXT EDITION PUBLISHED	7 JUNE

FROM THE LOCAL MINISTER

The Purley Parish News is published and distributed ten days to a fortnight after it is written. When it comes my turn to write this part, there is always some concern that in the gap between me writing and you reading there will have been some event of such local, national or international importance that you might think "How could Andrew not even have mentioned that?"

My concerns this time are smaller than normal. As I write this, we are in the final throes of preparing for Roger Howell's last weekend as Rector of Purley. By the time you read what I have written, it is quite likely that Roger and Jean will have closed the door of the Rectory for the last time after 17 years, and will have moved to their new home in Witney in Oxfordshire. I am sure that you join me in wishing them a long, healthy and happy retirement.

So what happens next in Purley?

Some residents of the village hoped that, having had a party on the weekend of 19/20 April where we could say goodbye to Roger and Jean, the weekend of 26/27 April would be the occasion of the party to welcome Roger's successor. I can reassure you that you have not missed the opportunity to welcome your new Rector!

The process for selecting a new Rector varies from parish to parish. Officially, it is the Lord Chancellor who decides who will be the next Rector of Purley, and I have no doubt that in years past the parishioners might expect that in due course someone would arrive bearing a letter confirming him as having been appointed by the Lord Chancellor. We do now have a little more say in the matter!

In my secular job, I have been responsible for many recruitment campaigns. The process has always been the same. First, you write a job description and a person specification to help you determine what kind of skills and experience you are looking for. Then you find a way of attracting candidates – generally by advertising, or running an open day or something similar. Having attracted too many candidates, you then spend time and effort producing a short list of the candidates you are most likely to employ. The next stage is to invite the candidates to a selection day where you decide which candidate you will make the offer to. If you have done well enough at selling the job to them, they will accept your offer. If not, you are left to decide whether the candidate you liked second best is close enough to your ideal picture of the person you wanted when you started the process.

The process for finding the next Rector will be similar, but different.

We start by writing a document, which is similar in purpose to a job description and person specification. A small working party is well down the road to producing our Parish Profile. However, we are in the fortunate position that we don't need to advertise for candidates. The Lord Chancellor's Department already has a list of priests who have let it be known that they feel that they are being called by God to leave their current parish. Nor do we have to put the effort into producing a short list of candidates. That is also done by the Lord

Chancellor's Department. The length of the short list produced will be one, and that person will be invited to visit Purley. When they visit, the main people they will meet will be two representatives of the church, and we have elected our Churchwardens as our representatives. They may also meet a few other people. In addition, the Bishop will meet them. The candidate, our representatives and the Bishop will then separately give feedback to the Lord Chancellor's Department. If all are in favour, a letter will arrive from the Lord Chancellor confirming who has been appointed as the next Rector of Purley. If not, the Lord Chancellor's Department will inform us who is on the next short list.

So how long will it be before we can organise the party to welcome the next Rector of Purley? As noted above, it is 17 years since the Rectory in Purley was last vacant, and there have been changes in the process over these years. On that occasion, the Rectory was empty for about a year, the Lord Chancellor's Department allowing time for reflection on feedback before producing the next short list.

So what should we do in the meantime?

St. Mary's church remains open as usual, it's just you will see much more of Revd Jean Rothery and myself leading services – so we look forward to welcoming you Sunday by Sunday. But we do need something special from you at this time. We need you to pray. Please pray about each stage in this process. About the completion of the parish profile, for Nic Wheeler in the Lord Chancellor's Department as he reads what we have written and considers the candidates before selecting the short list, for the candidates themselves, our representatives and Bishop Stephen as they seek to determine whether it is God's will that this candidate should be the next Rector, and for each other as we wait.

Thank you for your prayers.

Andrew

STOP PRESS: You can read about Roger's last weekend elsewhere in this issue

**CHAMPION'S
CHALLENGE!**

**St Mary's Church Holiday Club
11-15 August 2008**

9.30am-1.30pm each day
Cost £30 for the week

Open to all Primary School aged
children

Further details from
Anna Saverton (942 8351) or Sally Robertson (962 5978)

CHURCH SERVICES

4 May	9.30am	Family Worship
	11.15am	Holy Communion
	6.00pm	Holy Communion
11 May	10.30am	Pentecost Communion
18 May	9.30am	Family Communion
	11.15am	Morning Worship
	6.00pm	Evening Worship
25 May	9.30am	Family Worship
	11.15am	Holy Communion
1 June	9.30am	Family Worship
	11.15am	Holy Communion
	6.00pm	Holy Communion
8 June		No services at St Mary's Purley (see below)
15 June	9.30am	Family Communion
	11.15am	Morning Worship
	6.00pm	Evening Worship

with talk by Kim Facer of Purley Park

WORSHIP IN THE WILLOWS

ACT (All Churches Together in Berkshire) Pangbourne District would like to welcome you to *Worship in the Willows* on Sunday 8 June at Pangbourne Meadow. This is an annual event where all the churches in the area get together to worship God. The service starts at 11am and is followed by lunch to which everyone is invited. We will be joined as usual by the local Scout, Guide and Brownie groups.

The theme this year is *One Big Family*. God has adopted us all, every one of us. If that isn't a cause for celebration, what is? We plan to celebrate our togetherness by inviting people with learning disabilities to take part in our service. The Speaker will be David Bendor-Samuel, from Causeway Prospects, a local Christian charity that encourages people with learning disabilities to live their lives to the full.

Come yourself, and invite your neighbours and friends with learning disabilities to share that experience of being *One Big Family*. Let's find ways to celebrate together and learn from each other.

Christine Mackie

COMMUNITY'S GIFT AS ROGER HOWELL RETIRES

A very busy but hugely enjoyable weekend has just finished. Many were involved in making it such a memorable and wonderful weekend for Roger and Jean Howell. A huge thank you to all concerned.

We would also like to thank everyone who responded to and contributed so generously to the Rectors Retirement Fund. A cheque for £11,511 and a book of signatures and good wishes was presented to Roger and Jean Howell at the Purley Barn on Saturday evening. This will be of such help to them as they settle into their new home and community. Many people wished to give, whether or not they were associated with the church, including many who have left the parish and our friends in Pangbourne. We were truly touched by the good wishes and kind comments passed on with the donations and I think it is fair to say that Roger and Jean were momentarily stunned at the gift.



The weekend started with a celebration of all that Roger and Jean have achieved over the last 40 years in Christian ministry and especially in the last 17 years with us here in Purley. 130 people joined Roger and Jean at Purley Barn on the Saturday evening – many of whom were representatives from the local community in Purley. After the presentation to Roger and Jean, Purley Puppets performed a sketch based on Roger's favourite book of the bible *Romans* and a song, which painted a picture of the hope for us all. Sandra Hoskins wrote and presented a poem all about their life and work in Purley. Jenny Robertson read out an acrostic poem, which she had memorised, and which spelled out "Howells". Purley Players performed a lighthearted sketch "Leading ladies" and the church youth group WAM performed a "trip down memory lane".

On the Sunday, over 120 people joined Roger and Jean for the morning service. There wasn't a dry eye in the church at the end of a moving service when more than 20 children from Sunday school brought gifts of bulbs and plants to Roger and Jean. The children spanned the age range of the 17 years that Roger and Jean have spent with us. All enjoyed cake and coffee served afterwards.

A full peal of bells heralded the evening service of thanksgiving. 150 people attended the service many of whom came from previous parishes that Roger and Jean have served. Many travelled considerable distances to be with us. The message was one of thanksgiving to God for sending Roger and Jean to us – "they were an answer to prayer" was one quote.

Now we begin a new chapter. We would be truly grateful for your prayers over the next few months as we work towards finding a new Rector to serve the parish and the church here in Purley.

Thank you, again.

Debbie Corrigan and Mary Barrett
Church Wardens

GREENER COMMUNITY BUILDINGS

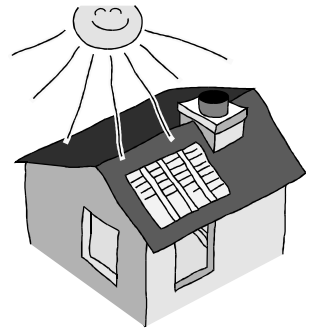
A new fund promises to bring more sustainable space and water heating, electricity and insulation to community buildings. It will support solar water heating, heat pumps, wood pellet stoves and wind or water electricity generators.

The Community Sustainable Energy Programme aims to distribute £9 million to community not-for-profit organisations in 2008/9. The fund will help pay for both feasibility studies and the costs of equipment and installation. It offers £5000 (or 75% of costs, whichever is lower) towards a feasibility study, or £50,000 (or 50% of installed costs, whichever is lower) towards the recommended solution and its installation.

The fund is open to applications from community groups, charities and trusts, parish councils, schools and colleges, faith organisations and mutual societies. The quarterly deadlines for applications are 16 May, 15 Aug, 7 Nov 2008 & 30 Jan 2009.

The programme is managed by BRE and supported by the Big Lottery Fund. See www.communitysustainable.org.uk for full details.

The Energy Efficiency Advice Centre on 0800 512 012 provides impartial advice on renewable energy technologies. This service can also connect homeowners with discounted loft and cavity wall insulation, including 100% grants for the over 70s.



A MESSAGE FROM ROGER AND JEAN

Dear friends,

We had a marvellous and memorable send-off at the Barn on our last Saturday, and two very special services at St. Mary's on the following day. We were completely taken aback by the size of the cheque – literal and numerical - that was presented to us. Our heartfelt thanks go to all who contributed to it both from the church and wider community. We hope to spend some of it on a new bathroom – to replace the beige-pink suite and cream and white tiles with orange and brown flowers on them!!

It was a lovely surprise when we arrived at the Barn on Saturday evening to see the place packed with friends from different sections of the community. Many kind words have been said to us, lots of cards received as well as plants for our new garden which we are pleased to say will be much smaller and require less upkeep than the Rectory garden. We now look forward to the move to Witney and in due time to arranging the garden and enjoying the sun in it. We shall miss being in such a friendly community, but hope to keep our links with Purley as well as making new friends.

Roger and Jean Howell

PURLEY HORTICULTURAL SOCIETY



SPRING SHOW

The 24th Spring Show was held on Saturday, 5 April with over 100 entries. There was a very good display of daffodils and narcissus, which was surprising in view of the early arrival of these flowers. Mr Ray Stuart from Pangbourne won the Springs Farm Cup for gaining most points at this Show. Congratulations to all the other exhibitors who won prizes.

TRADING

The Store in the Memorial Hall Car Park is open on Saturdays and Sundays from 10am until 11am and membership of the Society is only £1.50 per year. New members can join at the Trading Store. Why not visit the Store and see the range of garden needs we stock. If existing members have not renewed their membership for 2008, we would be grateful if you could do so as soon as possible.

PLANT SALE

This will be held on Saturday, 10 May in the Purley Memorial Hall Car Park starting at 9.30am until 11am (approx). Bedding plants and various other plants will be available. Please try and come along and bring your friends as this helps the Society financially.

Happy gardening.

Marion Dabbs
942 2349

GARDEN TRIPS FOR GARDENERS

THURSDAY 10 JULY 2008 HAMPTON COURT PALACE FLOWER SHOW

A Horticultural catwalk, a feast of grow-your-own delights at this most popular flower show

At the height of summer, one of the world's most famous royal palaces plays host to the sumptuous Hampton Court Palace Flower Show. The Hampton Court Palace and surrounding parkland provide an idyllic setting for the world's largest horticultural show, where gardeners of Purley can see, smell and touch an abundance of floral delights.

This event features superb landscaped show and water gardens bursting with inspirational ideas for your garden, as well as, a spectacular range of flowers, plants and gardening accessories to browse and buy.

This RHS spectacle is the largest of its kind in the world. Enjoy around 50 inspiring display gardens including the tranquil water gardens, a unique category of this show, and the innovative conceptual gardens showcasing the next big names in garden design. From contemporary to traditional, there are plenty of design ideas to suit any garden lover.

Hundreds of the UK's best nurseries fill the floral marquees, Festival of Roses and Plant Heritage Marquee, and floral art, fruit and vegetables and floristry are also a major part of the show. Cost £36 per PHS member. Applications by Sunday 15 June.

TUESDAY 22 JULY 2008 TWO VERY SPECIAL GARDENS

The Peto Garden, Iford Manor, Near Bradford on Avon

This award winning Grade I Italianate garden, famous for its tranquillity and beauty, was the home of Edwardian architect and landscape gardener, Harold Peto, from 1899-1933. Unique and romantic, he created the garden using his vast collection of architectural fragments on this steep sided wooded valley set beside the River Frome. Characterised by pools and terraces, statues, sculptures, evergreen planting and magnificent rural views, the garden also boasts a fine cloister and casita set among many plants of botanical interest. Iford garden was the winner of Historic Houses Association/Christie's Garden of the Year Award in 1998.

Iford Manor is mediaeval in origin, and has been occupied since Roman times; the classical facade being added in the eighteenth century when the hanging woodlands above the garden were planted. In 1899, Harold Ainsworth Peto discovered Iford and the individuality of the garden owes everything to his inspiration and eye for combining architecture and plants.

Lady Farm Gardens, Chelwood

"As the early morning mist rolls off a stony slope in the ten-acre Somerset garden of Lady Farm, a patchwork of low-growing, golden grasses is revealed, interspersed with the ghostly heads of thistle-like eryngiums, flat-topped yellow achilleas, silver leaved santolinas and early flowering kniphofias in flashy orange and red. Here and there, irises in purple and butterscotch brown complete the scene. The grasses are soft and romantic, and seem to spring naturally from the bite-sized pieces of South Cerney gravel mulch.

Like the rest of this remarkable garden, the slope has been imaginatively shaped and planted by the owner, Judy Pearce. She calls it her steppe garden and indeed it is characterised by low species that thrive in hot, dry summer temperatures and sub-zero winter ones. A formal garden round the house, a shady hosta walk with birch and hydrangeas, two lakes made from a stream and a new revine waterfall are all generously planted. In winter, the interest is structural; in summer, you are dazzled by the splashes of vibrant colour. "There is nothing quite like it, on this scale, in any other private garden in Britain" (The Times).

Both these gardens will open for our exclusive visit and the owners will give us a guided tour. Cost is £24.50. Applications by Sunday 22 June.

Full details and application forms for all events are available in the PHS Trading store beside the Memorial Hall or you can print via www.purleyonthames.net > Online Notice Board or Purley Groups and follow the links.

PURLEY JUBILEE FOOTBALL CLUB

The Under-13 team have won their league with a 100% record. They still have two games to play but their 12 wins out of 12 means that they are eight points clear of the second placed team. They have scored 84 goals and conceded just 9 to finish as champions by some distance.

The Under-10 team playing in Division 5 of the Hicks League have clinched promotion by finishing as runners-up in their league. They followed that up with success in their league's end of season tournament, winning the final with a golden goal in extra time.

It's the time of year for end of season tournaments. Also doing well, though not quite as successful, were the other Under-10 team, who lost in the semi-final of their tournament, and the Under-7s, who lost in their final.

The Under-8s got through to their final, but only after a marathon semi-final that lasted for 35 minutes instead of the allotted 20. Neither team scored in extra time and even after the teams were reduced to 4-a-side, it still took five minutes for Purley to get the winning golden goal. Unfortunately, they then had to go straight in to the final, which proved to be asking a bit too much.

The Development Squad sessions for Reception and Year 1 children continue to run on a Sunday morning from 10-11am on the lower field at the recreation ground at Goosecroft Lane (off Beech Road). New players are always very welcome at these sessions.

If you would like to know more about playing football with Purley Jubilee, please ring Andy Perryman on 943 1047 or visit our website at www.purleyjubilee.co.uk.

Strawberry Teas in the Garden **Sunday 22 June 1.30-5.30pm**



All in aid of St Mary's Church

Strawberry Themed Food, Teas & Cakes

Browse around the
Rose Walkway ~ Wildflower Meadow ~ Vegetable Garden ~ Fruit Cage

Excellent plant & produce stalls

Activities for children



At Cherry Acre

Purley Village (opp. Infant School)

THE ORDER OF JACOB'S WELL CELTIC HEALING SERVICE

Morlias Room, St Michael's Church, Tilehurst
8pm, Thursday 15 May
Everyone is welcome, please bring a friend

CHERRY ACRE GARDEN

Well! What a contrast! I opened the garden gates on the Friday and people came in wearing T-shirts, and I even got sunburnt! The cowslips, primroses and snake's head fritillary positively glowed throughout the garden, and the later flowering daffodils put on a good show.

Toddlers, and children enjoying a half-day from school, entered wholeheartedly into a Rabbit Hunt, which took them into each of the many areas of the garden. Rabbits found, clues unravelled, and prizes claimed, they then bounced on the trampoline, swung on the tree swings, hopped along the hopscotch, and challenged each other to games of badminton, table-tennis and even chess! Some adults took this active path, but mostly they walked at a leisurely pace around the garden before finding a sunny spot to relax with a cup of tea and slice of cake. Eventually everyone made their way home, many clutching a plant chosen for their own garden from the Plant Stall. How lovely it had been to feel the warmth of the sun!



Then, on Sunday, I awoke to that special stillness which only comes after snow! Although the garden looked beautiful, I reluctantly had to cancel the second open day. However, thanks to everyone's generosity, the Friday raised £420 for St Mary's Church. Thank you!



If you were disappointed to have missed the garden, or if you came and would like to see the garden in Summer, then take a note of the date, Sunday 22 June when Cherry Acre will be open in the afternoon for Strawberry Teas in the Garden. Hopefully the sun will shine down on the roses in the walkway, and the wildflowers in the meadow. With the vegetable plot now planted with all manner of

yummy vegetables, I hope to compliment the popular Plant Stall with a Produce Stall – unless it snows in June of course!

Nicki Woodward



PANGBOURNE & DISTRICT VOLUNTEER CENTRE

If you need help with transport, or know of anyone else who does, please call us. Volunteer drivers always needed! Do you have a few spare hours? Car drivers are needed to transport clients to hospitals, also for local journeys to doctors, etc. Help in the office is also required. Office opening hours: Mon/Wed/Thurs/Fri 9.30am to 11.30am. Please come and join us.

Call 984 4586 or pop into The Committee Room, Pangbourne Village Hall.

Pray for Purley

Our next get-together is on Friday 16 May at 7.30pm at St Mary's. Apart from praying, we plan to replicate the events of John chapter 21 when the disciples met with Jesus – after his resurrection - and shared a fish meal (only then it was breakfast).

All are welcome to this informal time: food orders in advance to the contacts below please; matters for prayer (for anything – large or small – that concerns you as a Purley resident) can also be mentioned in advance or brought along on the night.

For more information please contact either of us below:

Nan Craig	Tel: 942 8266	4 St Mary's Avenue	nan.craig@btinternet.com
Chris Rayers	Tel: 942 1880	9 Allison Gardens	c.rayers@talk21.com

PURLEY WI

Purley W.I. continues to attract visitors to meetings- it is good to see new faces amongst all the familiar ones. The committee is up to full strength and we hope this will be an enjoyable year. This month we awarded an Honorary Membership to Valerie Hutchinson -a member of our W.I. for many years, and we hope that we will continue to see her from time to time.

We looked forward to hearing the speaker for our April meeting on "Body Language", and were not disappointed by Kate Bradford's engaging and highly amusing talk. In her descriptions of our gestures, facial expressions, ways we sit and greet one another, we recognized our own behaviour only too readily, and there was a great deal of laughter throughout. With plenty of audience participation, Kate's talk was lively and informative, and we enjoyed the interesting look at ourselves!

Some of our members attended the Berkshire Federation W.I. Annual Meeting at the Hexagon on 16 April, also attended by the Mayor of Reading, Chris Maskell, where the yearly awards were presented. It is quite amazing to see that

Berkshire has Institutes dating back 90 years: makes Purley feel quite youthful! The speaker on this occasion was Rosemary Hawthorne, "The Knicker Lady". She took us through the history of this noble garment from its earliest times to the present day with an astonishing collection of garments, mostly underwear, whisked from a series of suitcases on a table. Rosemary had the audience almost helpless with laughter with her very enjoyable presentation.

COMPETITIONS

Flower of the month	Nicki Woodward
Monthly competition	1 st Ann Davis 2 nd Alice Gostominski 3 rd Helen Blanchard

Next meeting 14 May, 7.30pm at Purley Memorial Hall, Glebe Road, Purley – Resolutions, Cheese & Wine and Quiz. Visitors welcome.

Next Farmers' Market will be 10 May at The Barn.

Lesley Honor

KEEPING FIT

We started a new term on 29 April to get fit for holidays, if you would like to join us, you will be welcome.

The venue is The Barn in Purley the cost is £4 pounds a session.

For more info ring June Mycroft on 967 6376

SCABULOUS SCRABBLE

Scrabulous is a recent newcomer to the internet where Scrabble players log-on to play their game of Scrabble. There's no doubting that Scrabulous is proving to be very popular. If you are one of those people who are experiencing the enjoyment of the game, why not consider going along to your local Scrabble club. West Berks Scrabble Club (which is Purley based) would welcome you most warmly to their fold.

Scrabble is a wonderfully addictive challenging word game, and all those players who have been introduced to it through Scrabulous will certainly know this.

So, why not leave your computer to play someone face-to-face at West Berks Scrabble Club. You'll be in a very friendly sociable environment, and with club members' wide range of abilities you will be put at ease and will just slide into your very own comfort level right away.

West Berks Scrabble Club meet twice weekly at The Barn, Purley on Thames on Tuesdays 7.15-10p.m. and Thursdays 2-5p.m. For further information please contact Ian or Elizabeth Burn on 984 5045.

PURLEY PATHFINDERS - A WALKING GROUP FOR LADIES

With spring in the air, it has been a joy to be out in the countryside – even better when accompanied by a jolly band of ladies to share those special moments! We continue our *Village Life* theme by exploring the villages which form the link between many different areas. Beginning from Woodcote soon the residential area, with gardens filled with colourful camellias and other spring flowers, was left behind as a quiet lane took us out into lovely countryside with good views towards Wittenham Clumps. On this St Patrick's Day, there was not much evidence of shamrocks along our way, but we were on the lookout for daffodils! We were not disappointed for as we came to the gateway leading to the 17th century Beech Farm, we were greeted with a wonderful display of daffodils stretching away down both sides of the drive. From grassy paths and hillsides dotted with sheep and lambs we gained lovely views away towards Goring to our right, and, down below us, to the rooftops of Elvendon Priory. Incorporating the remains of a medieval house, it once formed a retreat for the Priory at Goring. Elvendon means 'Fairy Hill' and we felt the fairies had definitely been at work in these surroundings as we wandered down the hillside, scattering the sheep, before climbing beside the Priory between banks of daffodils – magical! As a contrast to the open fields of the first half of the walk, we now entered the Great Chalk Wood where bluebells were already showing a few flowers amongst the white wood anemones. From Crays Pond more woodland led us to Greenmoor Hill where we noted the former Chapel which has now been converted into a pretty little house. Soon we were back amongst the gardens of the houses in Woodcote.

Our next walk began in the idyllic Chiltern village of Pishill. We climbed from hollows to peaks to gain outstanding views across some of the most beautiful countryside the Chilterns has to offer. Part of our walk took us onto the Chiltern



Way as it climbed through the parkland of Stonor House. A large herd of deer grazed nearby, and down in the folds of the hillside, Stonor House looked wonderful set in its secret valley – possibly one of the reasons it has survived through history, housing a strong Catholic family. We admired its Chapel which incorporates Medieval stones, some of which we could see set in the ground. In the past, the route we had taken was used to take wool on its way to

Flanders to be made into wonderful tapestries which survive to this day. As we continued to Southend we were serenaded by small birds from the hedgerows, while Red Kites whistled from above. From the Turville Court Estate we had a good view across the valley to the Turville Windmill, featured in Chitty Chitty Bang Bang, sitting high above Turville Village, film location for The Vicar of Dibley. We continued amongst the folds of 'ironed' grassland, and on into the

bluebell woods of Summerheath. Back at Pishill we admired the pretty farm buildings and old brick and flint cottages as we made our way back to the Crown Inn. The Inn holds a large Priest Hole, and holds an area where Dusty Springfield and The Beatles used to have 'jamming' sessions. We, however, were glad of its hospitality for lunch!

As I write we are looking forward to our Springtime Special to Cricklade to, amongst other things, walk in the famous snake's head fritillary meadows. Our local walks will explore the countryside around the Downland villages of Blewbury, East Hagbourne and Upton; the bluebells of Purley, Pangbourne and Sulham, and the bluebells and blossom around Cane End. May is our birthday month and we will celebrate by sailing up the Thames to Mapledurham for a walk, before a tour of the house and watermill. So- lots to look forward to in early summer for the ladies of Purley Pathfinders. To find out more details about the group go to our web site, www.purleypathfinders.co.uk, or give me a ring.

Nicki Woodward
nicki@cherryacre.com - 984 2112

ART & CRAFT SHOW

24 MAY 2008 - 11.00AM-5.00PM

DENEFIELD SCHOOL, LONG LANE

Art & craft sales

Hands-on workshops in jewellery making, puppet making,
woodland and seaside sculptures and more...

Something for everyone!

Light refreshments - Plenty of parking - Free Entry

www.open-studios.org.uk



THE OLD TESTAMENT IS IT RELEVANT FOR CHRISTIANS TODAY?

MONDAY 19 MAY 2008 AT 8PM

A Special Event at

Englefield C E Primary School

presented by Dr Hugh Williamson FBA

Regius Professor of Hebrew in the University of Oxford.

Hugh Williamson is a renowned Old Testament scholar and an excellent communicator who has written widely.

His wife Julia is an Anglican priest in Suffolk.

PURLEY ON THAMES PARISH COUNCIL



The next Farmers' Market will be held at the Barn on 10 May 2008 and on the second Saturday morning of each month thereafter. As there are still pressures on parking, if you are able to walk to this event please do so to maximise the number of spaces available for those less able. Please also avoid parking on any yellow hatched areas, which should be left open for emergency vehicles and to allow access to other users of the Goosecroft site which may include increased sporting activities during the summer months.

There is still a vacancy for a councillor following the resignation of Alex Stott and the Parish Council has now been granted the powers to co-opt a suitable candidate. If you are interested in helping within your village, please contact myself or the Chairman for further information.

By the time this magazine is published the Annual Parish Meeting will have taken place and the WBC travel token issue completed. If you have any queries about tokens, or the new national bus pass, please contact the Concessionary Fares Team direct on 01635 519800.

Denefield School have obtained a grant to run bicycle maintenance sessions and are seeking assistance with the courses, which will run for 4 weeks from 29 May between 3.15 & 5.15pm. Anyone interested is invited to contact Sue Guy on 941 3458 ext. 8978 for further information.

Finally I have decided to retire from the role of Clerk to the Council with effect from the end of April but will still be around for a couple of months or so to finalise the accounts for 2007/2008. I would like to thank you all for your support and feedback over the last seven years. Janet Field who has been acting as Assistant Clerk for the last few months has been invited to take over and I am sure you will provide her with the same support and encouragement.

Brian J. Smith, Clerk to Purley on Thames Parish Council

CHAIRMAN'S REPORT

May starts the new Council year for us, and this month annually we review and reconvene our committees and working parties. We have published our Annual Report for 2007/8, which was available at the Parish Assembly meeting in April. We publish it on our website, and we again this year distribute copies to everyone we can via the Chronicle Extra free newspaper. If you get this, PLEASE look out for the report – don't throw all the inserts away in May!

You should also get a further newsletter about the Tilehurst Learning Campus via the Chronicle route about now. West Berks have met with the schools minister Jim Knight to explore the possibility of more funding for the project. There does seem to be some potential to fund the revised proposal (two schools plus community facilities on one campus at Denefield), though this will not be clear for another year. In the meantime, WBC will look at how to improve the current facilities at both Denefield and Brookfields special school. Long Lane primary school has now dropped out of the scheme, and will stay on its present site and

we are looking for money from a different funding programme to improve that school as well.

Whilst our attempts to provide better facilities in the village for older youth have not yet met with success, we are pursuing another avenue to provide activities for these young people. We have started a Youth Forum, joined by a number of organisations that can help, to pool our resources and create a programme of activity and support. We hope to involve some of the young people to promote and manage it. More as this develops. We still intend to create permanent leisure facilities where we can, but recognise now that there are always considerable obstacles to overcome – for once, money is not the main issue.

Our neighbourhood Wardens have been busy around the village. They are involved in the youth programme as well, and are very keen and enthusiastic to provide positive support as well as their monitoring and regulating role. They have also been clearing up footpaths and graffiti, and helping the look of the village.

We intend to call a meeting later this month for Flood Wardens and residents of the lower village, to provide information about flooding emergencies and our flood plan, to report on the discussions that we have had with the Environment Agency and West Berkshire after our analysis of the January event, and to ensure that our Flood Warden scheme is fully up and running. Please look out for notices about the meeting.

At the Parish Assembly, we launched the 2008 Villager of the Year award, the details of which will be published in next month's Parish News, on our website, and around the village. We are looking for the person who most deserves Purley's recognition in 2008 for their contribution to all or a part of our community, and we will canvas your vote for the person you think most outstanding.

Finally, at the end of April, our Clerk, Brian Smith, will take a well-earned retirement from the role. We all want to thank him for his dedicated service to Purley on Thames for many years, and wish him well for the future. Our Assistant Clerk, Janet Field, will take over the Clerk's position from 1 May.

Rick Jones, Chairman - Purley on Thames Parish Council

The office, located near the tennis courts, opens:
Mondays (not BH): 5.45pm to 8.30pm
Including an opportunity to meet
Councillors between 6pm & 7pm
Thursdays: 9.00am to 3.15pm

Barn Manager: Jean Chudleigh 07917 453187

Neighbourhood Wardens: 945 5286
westberks.wardens@sovereign.org.uk
www.sovereign.org.uk/wardens

Purley on Thames Parish Council
Parish Office
Goosecroft Lane
off Beech Road
Purley on Thames
Reading
RG8 8DR
Tel/fax: 984 4507
E-mail: clerk@purleypc.wanadoo.co.uk

www.purleyonthames.net

MEETING ON FRIDAY, 28 MARCH

The Authority approved the draft three-year strategy 2008/09–2010/12 for policing in Thames Valley. Key headline targets include:

- Strengthen neighbourhood policing to respond to local need and increase public confidence, includes a target to increase the number of Special Constables to 300.
- To develop our partnerships with stakeholders to reduce crime and disorder
- To improve the service provided to victims, witnesses and the public. Includes targets to answer 90% of 999 calls within ten seconds and 90% of non-emergency calls received within 40 seconds.
- To protect communities from terrorism and organised crime, including a target to recover at least £3m of assets gained illegally.
- To use information and intelligence to be more effective
- To develop staff to give the best service
- To improve the use of our resources

Plans for a series of stakeholder meetings promoted jointly by the Authority and the Force throughout Thames Valley. The Chief Constable and other senior officers will attend each event. Invitees will include representatives from:

- Neighbourhood Action Groups
- Crime and Disorder Partnerships
- Council leaders and Chief Executives from District, County and Unitary Authorities
- Independent Advisory Groups
- Youth Offending Teams
- Drugs Action Teams
- Fire Service
- Race Equality Councils
- Criminal Justice partners
- Youth Forums/Parliaments

The meetings are designed to be consultative and will be held between 23 June and 21 July, with the final event specifically focused on Parish Councils.

The number of Crime Prevention Design Advisors (CPDAs) will be increased from four to ten. Each CPDA plays a part in educating housing developers, planners, architects and local elected members on crime prevention issues when planning for new housing and business developments.

The increase in their numbers reflects current estimates that more than 209,000 additional new homes will be built across the Thames Valley over the next two decades.

PROJECT PURLEY

The Rain or Shine Theatre Company is coming to The Barn on Friday, 8 June to present Shakespeare's *The Winter's Tale*. The event is being organised by Project Purley and all profits will be donated to the West Berkshire branch of the Alzheimer's Society. Tickets cost £12 (£8 concessions) and can be ordered from David Downs (942 4167). The evening performance begins at 7.30pm and there are a limited number of tickets available for an afternoon performance at 1pm.

ITEMS FOR SALE

Augusta Jones *Ireland* size 12 wedding dress, dry cleaned and boxed ready to be worn - needs to be seen to be appreciated: £750.

Multiyork *classic*, extra large 3-seater sofa and armchair covered in *Peony Trail* fabric (covers removable) - comfortable high backed seating, but being replaced: £150

Please call 984 1022 for details.

PLANT SALE AT PURLEY PARK

Purley Park Trust, in Huckleberry Close, is having a plant sale on Saturday 17 May 2007 between 10am and 12.30pm.

There will be a variety of plants on sale, including bedding plants, perennial plants, herbs and vegetable plants.



"...<link href='/sermons.css' type='text/css' rel='stylesheet'> I should like to make it quite clear there is no truth in the rumours that I am simply downloading my sermons from the internet!! <script language='JavaScript' src='/includes/general.js'></script>..."

LETTERS

Dear residents

Last month, B Morris wrote a public letter to the Parish Council concerning dog fouling on Brading Way, near to their home. This letter struck a chord of sympathy, because it is a nuisance that we fight against as well. Most dog owners in Purley are very responsible, and we don't mind where they walk their dogs, because they clean up after their pets.

However, a very small minority do not seem to care, and allow dogs to foul pavements, footpaths and recreation areas – even where young children play. We always challenge people if we see that sort of behaviour, and we always ask our Wardens to look out for this as well. Whilst we cannot force people to clear up, we do try and persuade them. Unfortunately, we can only tackle this one person at a time.

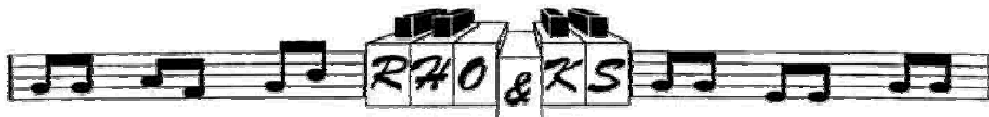
We do ask all dog-owners to respect the community that they live within.

Whilst writing, we have also received a letter concerning the Police Service, particularly in relation to Pangbourne Station. We are informed that the civilian duty officer at Pangbourne has retired, and they are trying to replace him. At present, there is a very limited service, for which they apologise.

However, for all non-emergency matters, calling 0845 8505505 actually works. Any reports to this number are recorded against the location, and the type of crime or behaviour. If a problem is recurring, our Neighbourhood police will be tasked to respond to prevent the problem building in that location.

These days, unfortunately, we do not give the Police the resources to respond immediately except in an emergency (for example, a crime in action - in which case use 999), so correct use of the non-emergency service is the best way to get ongoing problems of minor crime or anti-social behaviour resolved.

*Yours sincerely, Rick Jones
Chairman, Purley on Thames Parish Council*



READING HOME ORGAN & KEYBOARD SOCIETY

Our next concert is on Tuesday 13 May 2008
at Tidmarsh Village Hall, Pangbourne Road, Reading RG8 8ES at 8pm.

Our guest artist this month is Nick Martin, playing his Technics FA-1.

Our entrance fees are £6.50 for guests and £4.25 for members.

Further information can be obtained from Secretary Molly West on 942 7062.



Duchess of Kent House Charity

supporting local hospice care



Sunday 11 May
2pm

Charity Fun Walk in the Englefield Estate, near Theale. Register at the Fire Station, The Street in Englefield village from 1.45pm. Gentle 4 mile walks through the estate including farmland, the gardens, deer park and lakeside start at 2, 2.15 and 2.30pm. Sorry no dogs.

Tickets: £3 per adult, or £5 per family
Rereshments available

Ladies and Children's Charity Fashion Show

Up to 50% off Shop Prices!

Purley Barn, Purley on Thames

Clothing from leading High Street chain stores starting at £3 for children and £5-£30 for ladies.

Large selection of styles & sizes available

Stalls selling jewellery, cosmetics & canapés

Admission is by numbered ticket only at £5 which includes the first drink and entry into raffle

Children under 16 are admitted free

Payment of clothing by cheque or cash only



Friday 23 May
7.00 for 7.30pm

Barn Dance with the Scamping Rogues

Purley Barn, Purley on Thames

Tickets at £10 include Light Supper
Children under 16, £5

Licensed Bar



Saturday 5 July
7.30pm

Race Night

Holiday Inn, Bath Road, Padworth RG7 5HT

Includes 2 course meal - Ticket price £30.00

Licensed Cash Bar open until midnight

Raffle, Heads and Tails etc

Wonderful Auction Pledges



Friday 19 Sept
7pm

Tickets and further information available from

Duchess of Kent House Trust, 22 Liebenrood Road, Reading RG30 2DX
0118 939 4889 enquiries@dokht.org.uk www.dokht.org.uk

God's Word

May 28 -
June 1, 2008

Greyfriars
Church,
Reading

The
Great
Bible
Read



Given
to all...

...accessible
for all?

THE MISSION

To read God's Word in the heart of Reading and make it accessible to all abilities.

THE CHALLENGE

85 hours continuous reading.
From Genesis to Revelation.
Over 300 people taking part.

Be part of a unique event organised by Prospects: starting on the afternoon of 28 May the entire Bible from Genesis to Revelation will be publicly read and presented at Greyfriars Church in Reading.

WHY?

Firstly, bringing the Word of God directly to our community is an important witness and part of bringing the practical Good News of Christ to everyone.

Secondly, to highlight the need for a Scripture that is accessible to all. We'll use an "Easy-to-Read" version and 'readers' (of which there will need to be over 300!) are encouraged to creatively communicate using drama, song, signs and their own languages.

Thirdly, to raise awareness of and resources for meeting the spiritual needs of those 1.4 million people in the UK who have learning disabilities. The Great Bible Read is an inclusive event where people with and without learning disabilities will 'read' the Bible, and all participants are requested to get 'sponsorship' of £1 for every verse they read. The money raised is to enable the development of Bible resources for people with learning disabilities.

The Meet Monday Group will be taking part in this event on Saturday 31 May. We have pledged to read 200 verses, so our target is £200!

If you would like to sponsor us or to take part, please contact Christine Mackie mackie.family@btinternet.com. Alternatively you can sign up now to read by calling 951 6965 or by going to our website www.prospects.org.uk to register your interest.

A TALK BY PURLEY PARK TRUST

At the 6pm evening service at St Mary's church on Sunday 15 June, Kim Facer from Purley Park Trust will be speaking. Please come to meet Kim and find out more about Purley Park – everyone is welcome.

SUDOKU

How did you do with February's Sudoku puzzles? Here are two more – one rated easy and one hard. Unfortunately, the website I referred to in the February edition has closed. These were generated using another website, whose address is a little harder to learn: <http://www.opensky.ca/~jdhildeb/software/sudokugen>.

I've no idea how good or bad I am at doing these, but if you want a comparison, then I can tell you that I did the left one in 7¾ minutes and the right one in 36. Good luck!

7	9				6		
		3		6	4		
8			9			7	
		6		8		7	2
5	1			2		3	6
	2	8		1		9	
	8			3			2
		9	2		5		
		2				8	4

		2		8		7		1
			2				6	
5	7				1			8
	2	8			9		1	
9								7
	6		8			9	5	
8			1				3	9
	1				3			
2		4		6		1		

COULD YOU FILL THIS SPACE?

Do you flick through the pages of this magazine and think, "why doesn't my club write any articles in this magazine"? If so, perhaps you could offer to write something yourself? At St Mary's, we know that there are many clubs and societies out there that are not represented in these pages; many of our congregation are members. We would be delighted to hear from you and help publicise your activities. Just think... if you'd written an article for your club this month, you wouldn't have spent the last twenty minutes trying to solve the Sudoku puzzles that I put on this page to make up the space.

LESSON IN LYING

A minister told his congregation, "Next week I plan to preach about the sin of lying. To help you understand my sermon, I want you all to read Mark 17."

The following Sunday, as he prepared to deliver his sermon, the minister asked for a show of hands. He wanted to know how many had read Mark 17. Every hand went up. The minister smiled and said, "Mark has only sixteen chapters. I will now proceed with my sermon on the sin of lying."